



Notes:

These pages include spaces for postmarks listed in Friedemann and the ArGe Kolonien postmark catalog. Spaces are also included for Seepost and MSP postmarks that can be found on stamps of the colony.

There are certain postmarks, particularly Marine-Schiffspost postmarks, that are cataloged because the ship spent time in the colony, but are purely theoretical as no known copies exist on stamps of the colony. Pages are included for these for the sake of completeness, though they can easily be skipped or discarded if you don't want to include a page in your album that will likely never be filled.

As the postmarks are commonly found on stamps of different sizes and/or on piece, no stamp boxes are included. Rather, a large blank space is provided allowing for items of various sizes and quantities.

However, if you would like stamp boxes to match the style of those on the normal GermanStamps.net pages, or if you need any other customizations, please contact me through the "Contact Admin" form that's in the footer of every page on my website.

NOTE ON PRINTING: If, when printing, you have the option to print the pages actual size or shrink them to fit the paper, **do not select shrink to fit!** Doing so will shrink all content on the page. The pages should print correctly at actual size, regardless of any warnings your printer might give.

Cheers,

PostmasterGS



German New Guinea

Deutsch-Neuguinea

In the 1850s, German traders first established a foothold on the northern and eastern coasts of New Guinea, as well as on the surrounding smaller islands.

In May 1885, the German government entered into an agreement with the Neu Guinea Compagnie (New Guinea Company), under the terms of which the Company was authorized to acquire further lands as it saw fit. In return, the Company was to expand German influence within the area, and to build and maintain the local governmental institutions.



Flag of the
German Colonial Office

On 1 April 1899, the German government formally took control of the area formerly administered by the Neu Guinea Compagnie, as it had become cost prohibitive for the privately funded Company to develop and maintain the colony. An Imperial Governor was appointed to govern the colony, and in a reorganization of the German holdings in the South and Central Pacific, administration of the German colonies in the Carolines (1899), Marianas (1899), and Marshalls (1906) was eventually transferred to the Imperial Governor of German New Guinea.

German New Guinea was quickly conquered by Australian forces at the outbreak of WWI, and as with all of Germany's colonial possessions at the time, it was not returned to German control following the war. Instead, it became a League of Nations Protectorate under Australian control.



German New Guinea

Deutsch-Neuguinea



Postmarks

Berlinhafen

Post Office Information

Opened: 22 May 1898
Renamed Eitape: 1 October 1912



- Catalog:
- Friedemann 1
 - ArGe Kolonien BERLINHAFFEN D-N-G

- Dates of Use:
- 22 May 1898 to 30 September 1912

- Notes:
- Blue ink in January 1912
 - Month "II" instead of "2" in February 1908

German New Guinea

Deutsch-Neuguinea



Postmarks

Buka

Post Office Information

Opened: 26 July 1913

Closed: January 1915



Catalog:

- Friedemann 2
- ArGe Kolonien BUKA (D-NG)

Dates of Use:

- 26 January 1913 to January 1915

German New Guinea

Deutsch-Neuguinea



Postmarks

Deulon

Post Office Information

Opened: 1 January 1914
Closed: 29 September 1914



Catalog:

- Friedemann 3
- ArGe Kolonien DEULON (D-NG)

Dates of Use:

- 1 January 1914 to 29 September 1914

Notes:

- Cancels dated 20 September 1914 are commonly souvenir cancels

German New Guinea

Deutsch-Neuguinea



Postmarks

Eitape

Post Office Information

Renamed from Berlinhafen: 1 October 1912
Closed: 4 December 1914



- Catalog:
- Friedemann 4
 - ArGe Kolonien EITAPE (D-NG)

- Dates of Use:
- 1 October 1912 to 4 December 1914

German New Guinea

Deutsch-Neuguinea



Postmarks

Finschhafen

Post Office Information

Opened: 15 February 1888 Re-Opened: 15 July 1904
Closed: 19 March 1891 Closed: December 1914



Post Office, Finschhafen, 1888



Catalog:

- Friedemann 5
- ArGe Kolonien FINSCHHAFFEN ♦1

Dates of Use:

- 15 February 1888 to 19 March 1891

Notes:

- Used sporadically at Stephansort in April / October 1891

German New Guinea

Deutsch-Neuguinea



Postmarks

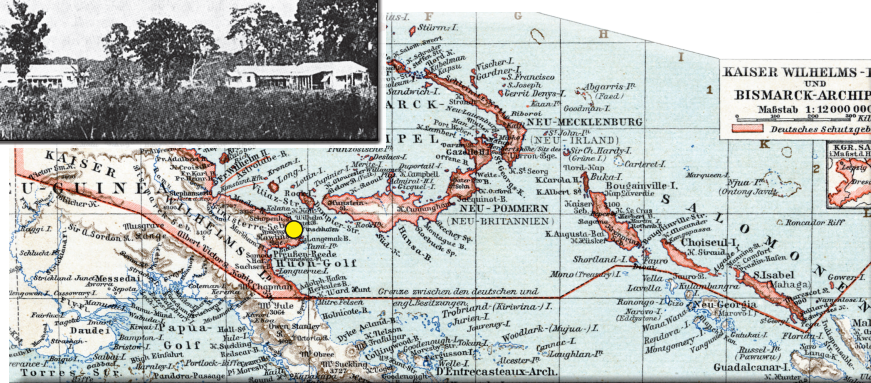
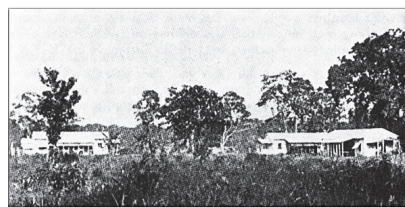
Finschhafen

Post Office Information

Opened: 15 February 1888 Re-Opened: 15 July 1904
Closed: 19 March 1891 Closed: December 1914



Finschhafen Station and Post Office, 1900



Catalog:

- Friedemann 6
- ArGe Kolonien FINSCHHAFFEN D-N-G ♦2

Dates of Use:

- 15 July 1904 to December 1914

Notes:

- With year date “15” handwritten over “13” known only on money orders

German New Guinea

Deutsch-Neuguinea



Postmarks

Friedrich-Wilhelmshafen

Post Office Information

Opened: 1 March 1892
Closed: Mid-September 1914



Catalog:

- Friedemann 7
- ArGe Kolonien FRIEDRICH-WILHELMSHAFEN

Dates of Use:

- 17 May 1892 to 31 August 1914

Notes:

- Blue ink on 17 May 1892 & in 1909
- Violet ink in 1906
- “1” in year date “01” overwritten by hand with “2” from 1-7 January 1902
- Used in Stephansort from 5 April 1897 to 2 December 1897 due to lack of postmaster in Friedrich-Wilhelmshafen

German New Guinea

Deutsch-Neuguinea



Postmarks

Hatzfeldthafen

Post Office Information

Opened: 1 April 1888
Closed: 30 September 1891



- Catalog:
- Friedemann 8
 - ArGe Kolonien HATZFELDTHAFEN

- Dates of Use:
- 1 April 1888 to 30 September 1891

German New Guinea

Deutsch-Neuguinea



Postmarks

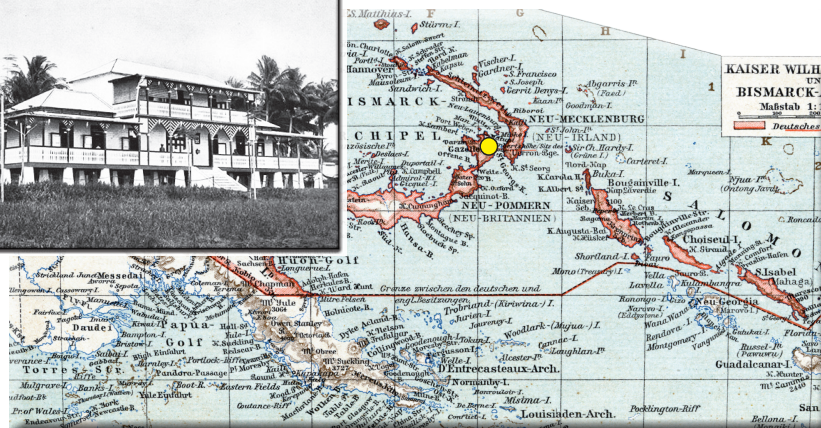
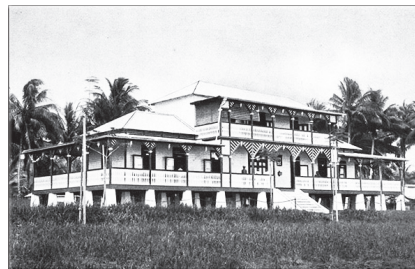
Herbertshöhe

Post Office Information

Opened: June 1890
Closed: 10 September 1914



Post Office, Herbertshöhe, 1900



Catalog:

- Friedemann 9
- ArGe Kolonien HERBERTSHÖH ♦1

Dates of Use:

- 7 February 1891 to 22 April 1900

Notes:

- Can be found with handwritten "II" instead of "2" as month in February 1897

German New Guinea

Deutsch-Neuguinea



Postmarks

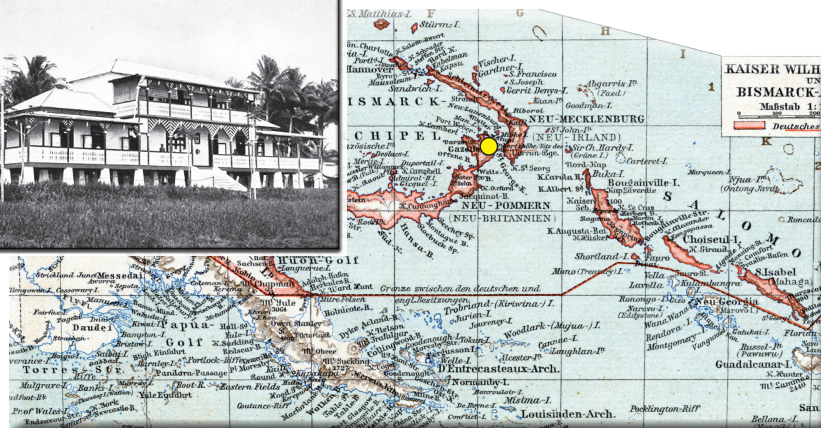
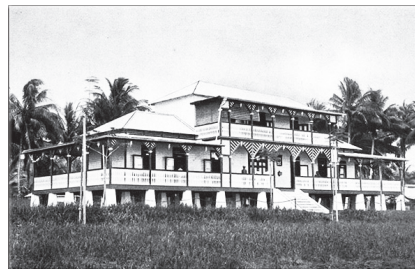
Herbertshöhe

Post Office Information

Opened: June 1890
Closed: 10 September 1914



Post Office, Herbertshöhe, 1900



Catalog:

- Friedemann 10
- ArGe Kolonien HERBERTSHÖHE D-N-G ♦2

Dates of Use:

- 22 April 1900 to 10 September 1914

Notes:

- Blue or violet ink in 1901

German New Guinea

Deutsch-Neuguinea



Postmarks

Kaewieng



Post Office Information

Opened: 1 January 1904
Closed: 17 October 1914



- Catalog:
- Friedemann 11
 - ArGe Kolonien KAEWIENG D-N-G

- Dates of Use:
- 1 January 1904 to 17 October 1914

German New Guinea

Deutsch-Neuguinea

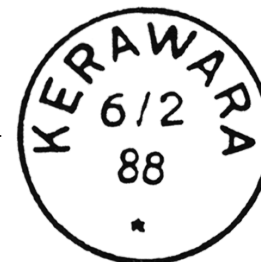


Postmarks

Kerawara

Post Office Information

Opened: 6 April 1888
Closed: June 1890



Catalog:

- Friedemann 12
- ArGe Kolonien KERAWARA

Dates of Use:

- May 1888 to June 1890

Notes:

- Due to lack of an "89" slug, 1889 dates can be found with "88" placed horizontally as provisional "89"
- Used in Herbertshöhe, June 1890 to 14 January 1891

German New Guinea

Deutsch-Neuguinea



Postmarks

Kieta

Post Office Information

Opened: 25 April 1907

Closed: December 1914



Catalog:

- Friedemann 13
- ArGe Kolonien KIETA D-NG

Dates of Use:

- 25 April 1907 to December 1914

Notes:

- In January and February 1900, without year or with "10" hand-changed to "11"

German New Guinea

Deutsch-Neuguinea



Postmarks

Konstantinhafen

Post Office Information

Opened: 15 May 1888
Closed: 30 September 1891



- Catalog:
- Friedemann 14
 - ArGe Kolonien KONSTANTINHAFEN

Dates of Use:

- 15 May 1888 to 30 September 1891

German New Guinea

Deutsch-Neuguinea



Postmarks

Manus

Post Office Information

Opened: 6 December 1912
Closed: December 1914



- Catalog:
- Friedemann 15
 - ArGe Kolonien MANUS (D-NG)

- Dates of Use:
- 6 December 1912 to December 1914

German New Guinea

Deutsch-Neuguinea



Postmarks

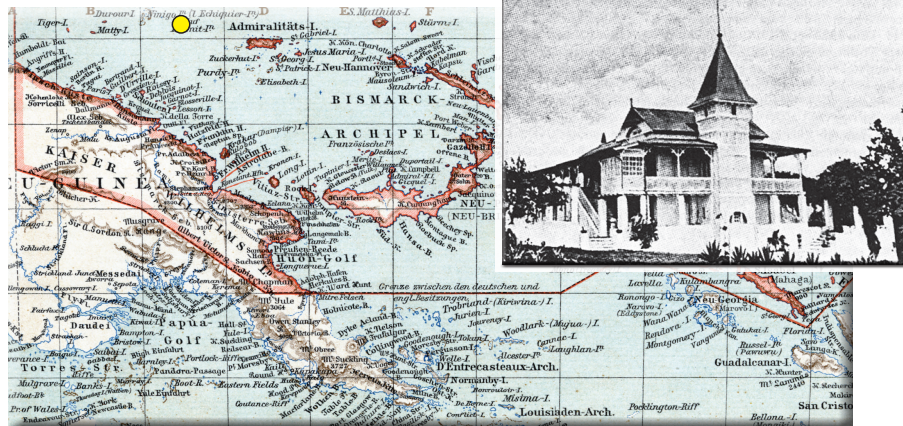
Maron

Post Office Information

Opened: 1 October 1910
Closed: November 1914



Post Office, Maron, 1910



Catalog:

- Friedemann 16
- ArGe Kolonien MARON D-NG

Dates of Use:

- December 1910 to November 1914

German New Guinea

Deutsch-Neuguinea



Postmarks

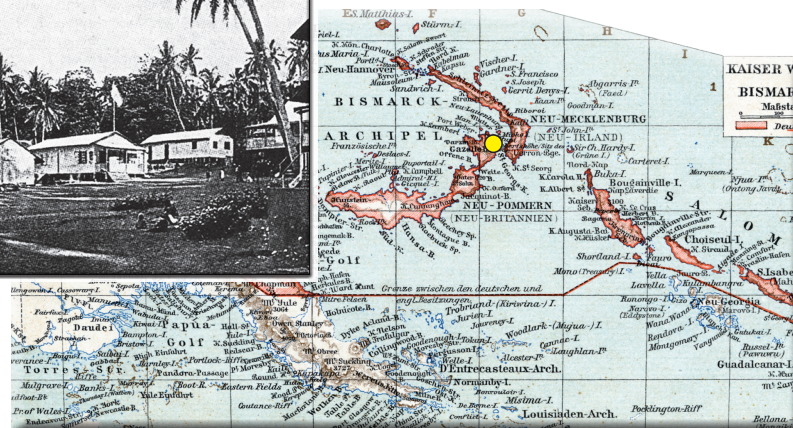
Matupi

Post Office Information

Opened: 1 November 1894
Closed: 31 January 1906



Post Office, Matupi



Catalog:

- Friedemann 17
- ArGe Kolonien MATUPI

Dates of Use:

- 1 November 1894 to 31 January 1906

Notes:

- In early 1895, can be found with year date "94" hand-changed to "95"
- Used in Kerawara, 4 April 1888 to May 1888

German New Guinea

Deutsch-Neuguinea



Postmarks

Morobe

Post Office Information

Opened: 20 January 1913
Closed: 11 January 1915



- Catalog:
- Friedemann 18
 - ArGe Kolonien MOROBE (D-NG)

- Dates of Use:
- 15 January 1913 to 11 January 1915

German New Guinea

Deutsch-Neuguinea



Postmarks

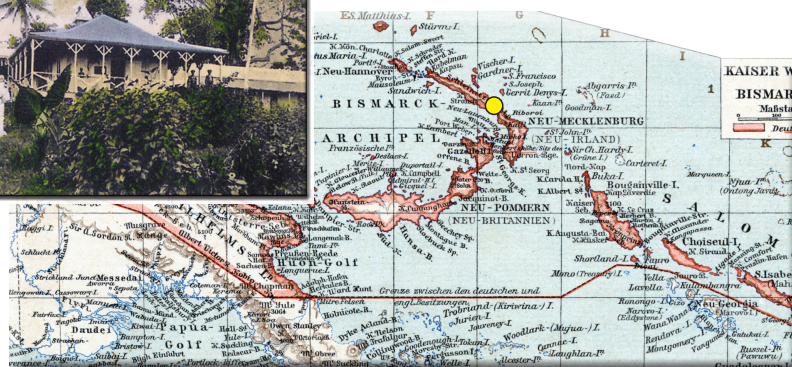
Namatanai

Post Office Information

Opened: 11 September 1911
Closed: November 1914



Post Office, Namatanai



Catalog:

- Friedemann 19
- ArGe Kolonien NAMATANAI (D-NG)

Dates of Use:

- Early December 1911 to November 1914

Notes:

- No canceller until December 1911

German New Guinea

Deutsch-Neuguinea



Postmarks

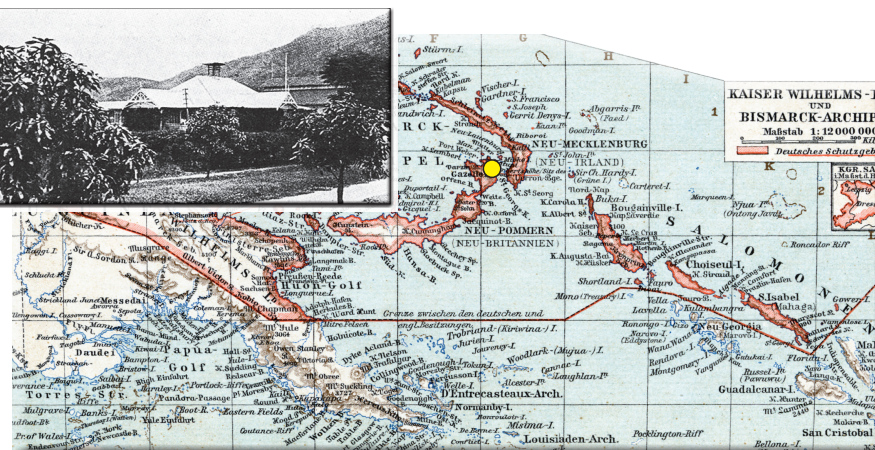
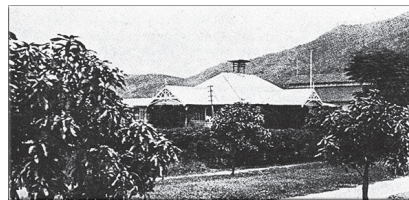
Rabaul

Post Office Information

Renamed from Simpsonhafen: 1 April 1910
Closed: 11 September 1914



Post Office, Rabaul



Catalog:

- Friedemann 20
- ArGe Kolonien RABAU D-NG ♦1

Dates of Use:

- 1 April 1910 to 11 September 1914

Notes:

- Unavailable from 10 April 1913 to September 1913 due to being returned to Germany for repairs

German New Guinea

Deutsch-Neuguinea



Postmarks

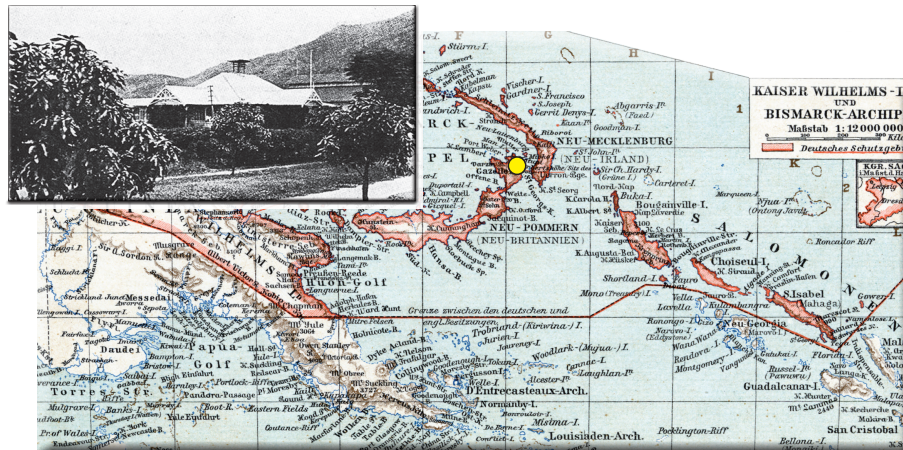
Rabaul

Post Office Information

Renamed from Simpsonhafen: 1 April 1910
Closed: 11 September 1914



Post Office, Rabaul



Catalog:

- Friedemann 21
- ArGe Kolonien RABAU a (D-NG) ♦2

Dates of Use:

- 6 April 1913 to 11 September 1914

German New Guinea

Deutsch-Neuguinea



Postmarks

Simpsonhafen

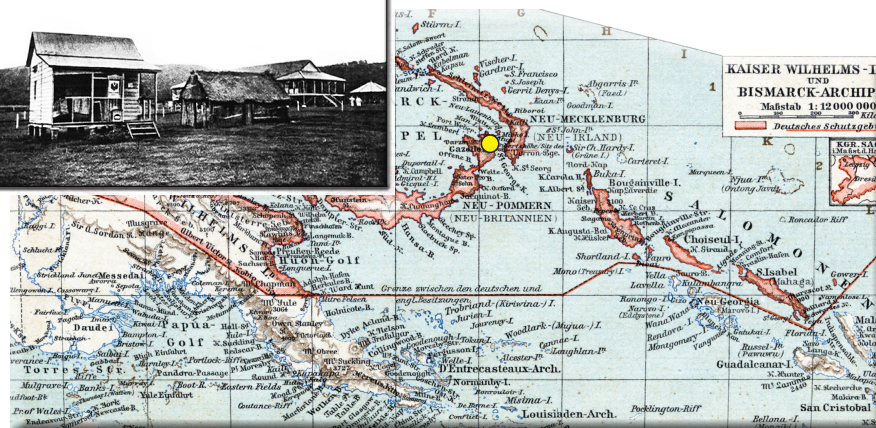
Post Office Information

Opened: 1 February 1906

Renamed Rabaul: 1 April 1910



Post Office, Simpsonhafen



Catalog:

- Friedemann 22
- ArGe Kolonien SIMPSONHAFEN D-N-G

Dates of Use:

- 1 February 1906 to 31 March 1910

German New Guinea

Deutsch-Neuguinea



Postmarks

Stephansort



Post Office Information

Opened: 14 December 1889

Re-Opened: 14 February 1893

Temporarily Closed: 30 July 1892

Closed: 30 June 1914

Post Office, Stephansort, 1890



Catalog:

- Friedemann 23
- ArGe Kolonien STEPHANSORT ♦1

Dates of Use:

- 14 December 1889 to 30 June 1914

Notes:

- In Germany for cleaning and thus unavailable from 20 August 1898 to December 1898
- Occasionally without day and month in 1892 and 1899
- Blue or violet ink in 1910 & 1912

German New Guinea

Deutsch-Neuguinea



Postmarks

Stephansort



Post Office Information

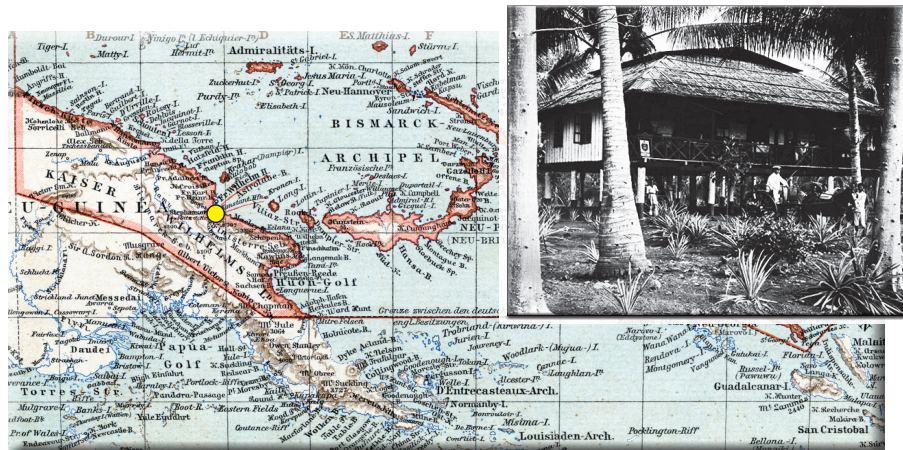
Opened: 14 December 1889

Re-Opened: 14 February 1893

Temporarily Closed: 30 July 1892

Closed: 30 June 1914

Post Office, Stephansort, 1890



Catalog:

- Friedemann 24
- ArGe Kolonien STEPHANSORT ♦2

Dates of Use:

- 1 January 1898 to 30 June 1914

German New Guinea

Deutsch-Neuguinea



Marine-Schiffspost Postmarks

MSP No. 2



SMS Bussard

Type: Unprotected cruiser
Class: *Bussard* class
Commissioned: 7 October 1890
Fate: Decommissioned, 25 October 1912

Period of Use on this Ship:
• November 1895 to 20 April 1899

Approximate Periods of Use in D-NG:
• May 1896 to July 1896
• December 1897 to February 1898



SMS Bussard

German New Guinea

Deutsch-Neuguinea



Marine-Schiffspost Postmarks

MSP No. 2



Prinz Sigismund

Type: Scheduled civilian steamer (NDL)
Launched: 12 May 1903
Fate: Interned & seized by the British
in Brisbane, August 19141

Period of Use on this Ship:

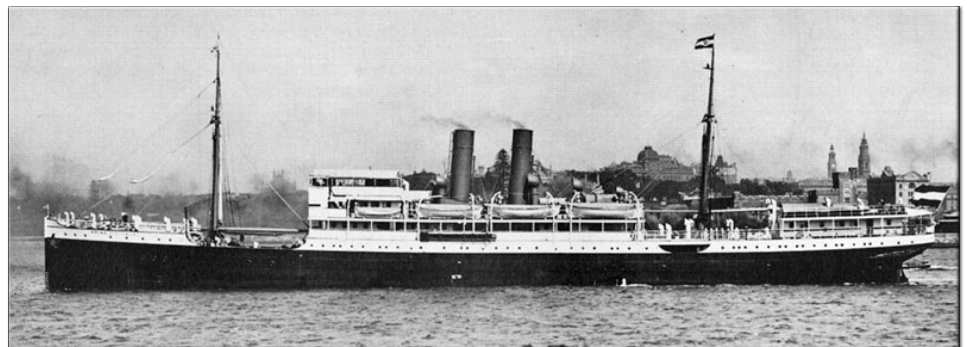
- 8 December 1904 to 5 January 1905

Approximate Period of Use in D-NG:

- December 1904 to January 1905

Notes:

- Year date handwritten in January 1905
- Transporting relief crew then relieved
crew of *SMS Möwe I*



Prinz Sigismund

German New Guinea

Deutsch-Neuguinea



Marine-Schiffspost Postmarks

MSP No. 3



SMS Falke

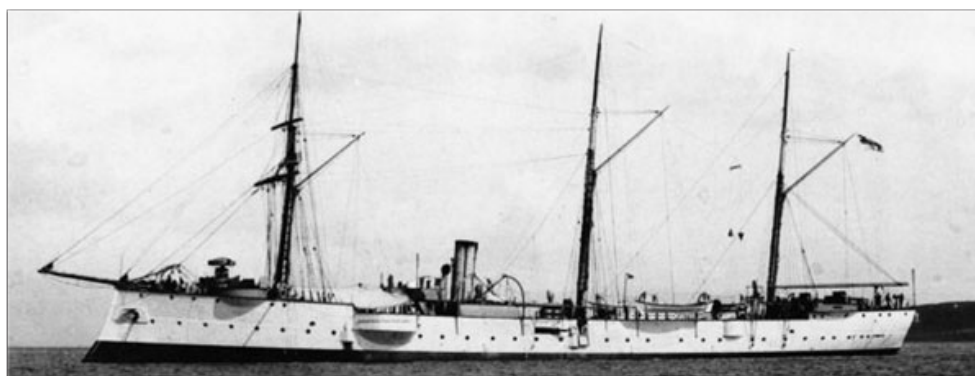
Type: Unprotected cruiser
Class: *Bussard* class
Commissioned: 7 October 1890
Fate: Decommissioned, 20 April 1907

Period of Use on this Ship:

- December 1895 to 14 October 1899

Approximate Periods of Use in D-NG:

- December 1895 to January 1896
- December 1896 to February 1897
- August 1897 to September 1897
- June 1898
- August 1898 to September 1898



SMS Falke

German New Guinea

Deutsch-Neuguinea



Marine-Schiffspost Postmarks

MSP No. 4



Prinz Waldemar

Type: Scheduled civilian steamer (NDL)

Launched: 3 June 1903

Fate: Interned in Honolulu, 1914;

Seized by the USA, 6 April 1917

Period of Use on this Ship:

- 2 December 1909 to 27 December 1909

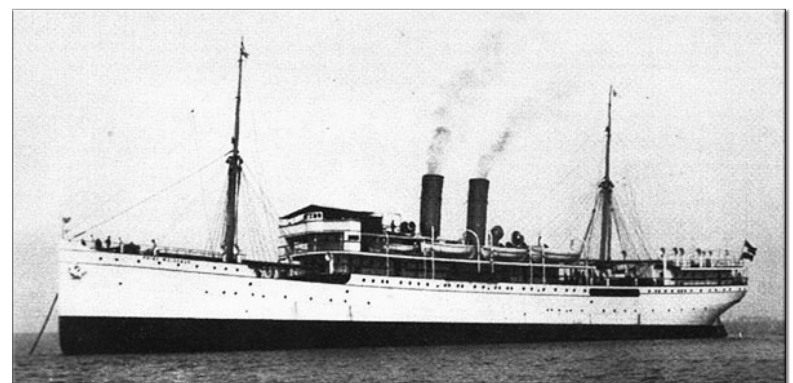
Approximate Period of Use in D-NG:

- December 1909

Notes:

- Transporting relief crew then relieved crew of *SMS Planet*

This is the possible period of use in D-NG waters. At present, no copies of this cancel used in D-NG waters during this period are known to exist.



Prinz Waldemar

German New Guinea

Deutsch-Neuguinea



Marine-Schiffspost Postmarks

MSP No. 5



SMS Nürnberg

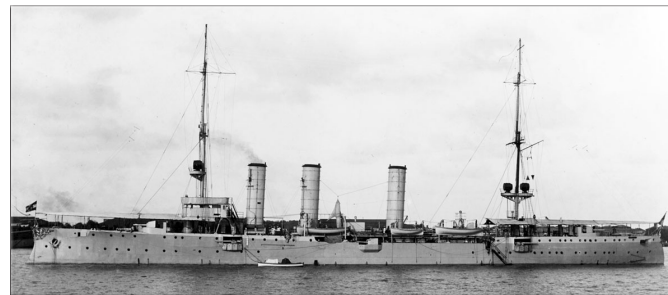
Type: Light cruiser
Class: *Königsberg* class
Commissioned: 10 April 1908
Fate: Sunk at the Battle of the Falkland Islands,
8 December 1914

Period of Use on this Ship:

- 14 February 1910 to 31 July 1914

Approximate Period of Use in D-NG:

- August 1910 to September 1910



SMS Nürnberg

German New Guinea

Deutsch-Neuguinea



Marine-Schiffspost Postmarks

MSP No. 7



SMS Möwe I

Type: Gunboat / Survey ship
Class: *Habicht* class
Commissioned: 31 May 1880
Fate: Decommissioned, 9 December 1905

Period of Use on this Ship:

- December 1895 to 29 October 1905

Approximate Periods of Use in D-NG:

- December 1895 to August 1896
- December 1896 to October 1897
- March 1898 to October 1898
- April 1899 to August 1899
- December 1899 to August 1900
- June 1901 to December 1901
- April 1902 to December 1902
- April 1903 to October 1903
- June 1904 to August 1905



SMS Möwe I

German New Guinea

Deutsch-Neuguinea



Marine-Schiffspost Postmarks

MSP No. 8



SMS Cormoran I

Type: Unprotected cruiser

Class: *Bussard* class

Commissioned: 25 July 1893

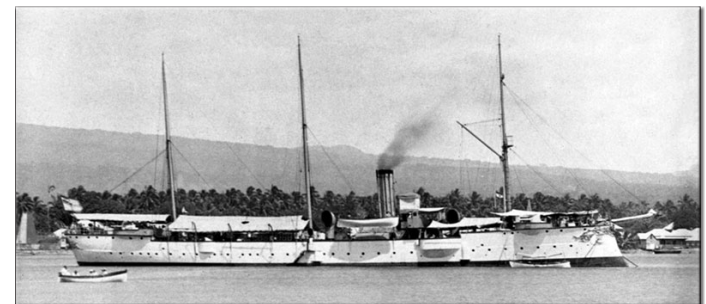
Fate: Scuttled at Tsingtao, 28 September 1914

Periods of Use on this Ship:

- May 1897 to 13 September 1903
- 8 May 1909 to 31 July 1914

Approximate Periods of Use in D-NG:

- | | |
|----------------------------------|---------------------------------|
| • March 1899 to April 1899 | • December 1910 |
| • December 1900 to March 1901 | • March 1911 |
| • June 1901 to July 1901 | • June 1911 |
| • February 1902 to March 1902 | • July 1911 |
| • February 1903 to March 1903 | • January 1912 to February 1912 |
| • September 1909 to October 1909 | • March 1912 to April 1912 |
| • April 1910 | • August 1912 to October 1912 |
| • June 1910 to July 1910 | • July 1913 to October 1913 |
| • October 1910 | • January 1914 to March 1914 |



SMS Cormoran I

German New Guinea

Deutsch-Neuguinea



Marine-Schiffspost Postmarks

MSP No. 11



SMS Seeadler

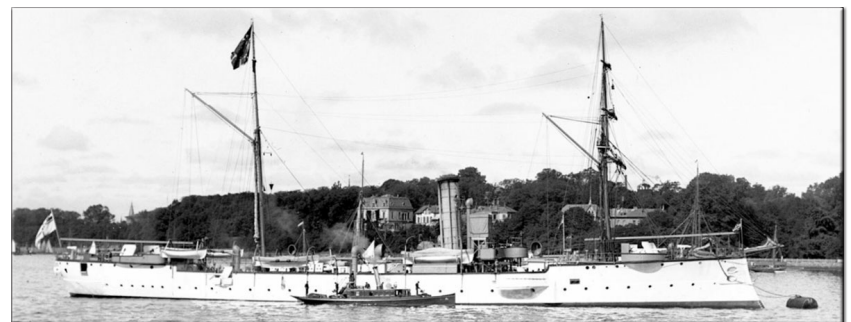
Type: Unprotected cruiser
Class: *Bussard* class
Commissioned: 17 August 1892
Fate: Exploded at Wilhelmshaven while being used to store mines, 19 April 1917

Period of Use on this Ship:

- 11 October 1899 to 20 March 1914

Approximate Periods of Use in D-NG:

- January 1900
- May 1900



SMS Seeadler

German New Guinea

Deutsch-Neuguinea



Marine-Schiffspost Postmarks

MSP No. 13



Prinz Sigismund

Type: Scheduled civilian steamer (NDL)
Launched: 12 May 1903
Fate: Interned & seized by the British in
Brisbane, August 1914

Period of Use on this Ship:
• 2 December 1910 to 26 December 1910

Approximate Period of Use in D-NG:
• December 1910

Notes:
• Transporting relief crew then relieved crew of *SMS Planet*

This is the possible period of use in D-NG waters. At present, no copies of this cancel used in D-NG waters during this period are known to exist.



Prinz Sigismund

German New Guinea

Deutsch-Neuguinea



Marine-Schiffspost Postmarks

MSP No. 15



Prinz Sigismund

Type: Scheduled civilian steamer (NDL)
Launched: 12 May 1903
Fate: Interned & seized by the British in
Brisbane, August 1914

Period of Use on this Ship:

- 5 December 1907 to 27 December 1907

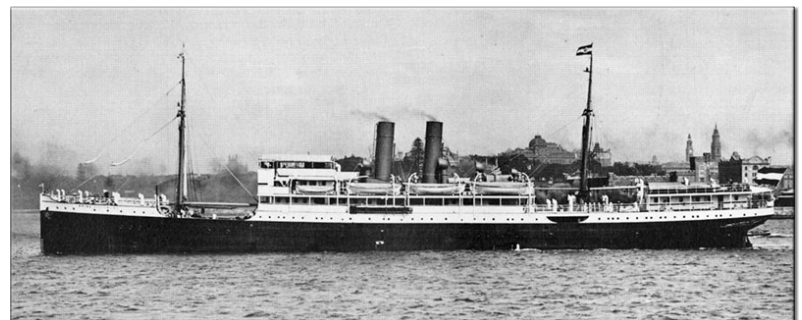
Approximate Period of Use in D-NG:

- December 1907

Notes:

- Transporting relief crew then relieved crew of *SMS Planet*

This is the possible period of use in D-NG waters. At present, no copies of this cancel used in D-NG waters during this period are known to exist.



Prinz Sigismund

German New Guinea

Deutsch-Neuguinea



Marine-Schiffspost Postmarks

MSP No. 16

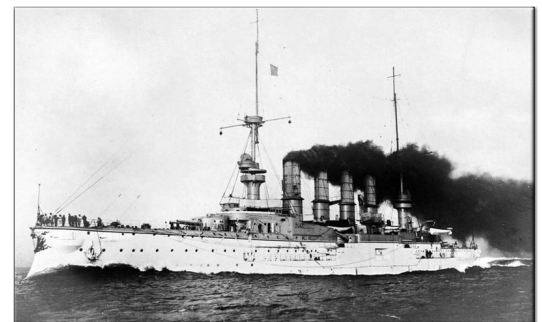


SMS Scharnhorst

Type: Armored cruiser
Class: *Scharnhorst* class
Commissioned: 24 October 1907
Fate: Sunk at the Battle of the Falkland Islands,
8 December 1914

Period of Use on this Ship:
• 2 November 1907 to 31 July 1914

Approximate Periods of Use in D-NG:
• August 1910
• July 1913



SMS Scharnhorst

German New Guinea

Deutsch-Neuguinea



Marine-Schiffspost Postmarks

MSP No. 17



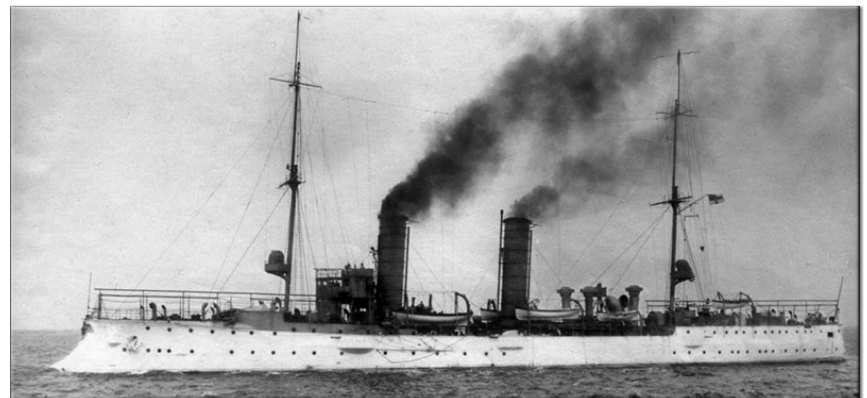
SMS Arcona II

Type: Light cruiser
Class: *Gazelle* class
Commissioned: 12 May 1903
Fate: Scuttled at Brunsbüttel, 3 May 1945

Period of Use on this Ship:
• 15 July 1903 to 2 April 1910

Approximate Periods of Use in D-NG:
• March 1909
• May 1909

These are the possible periods of use in D-NG waters.
At present, no copies of this cancel used in D-NG waters during these periods are known to exist.



SMS Arcona II

German New Guinea

Deutsch-Neuguinea



Marine-Schiffspost Postmarks

MSP No. 22



SMS Gneisenau II

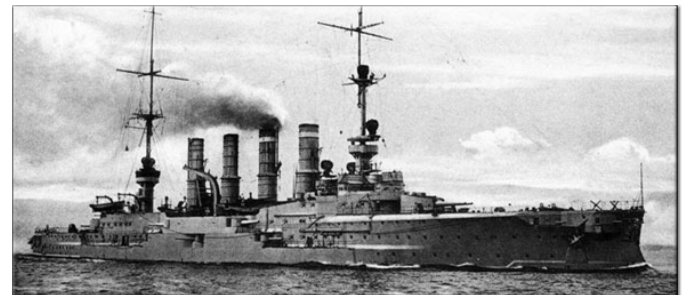
Type: Armored cruiser
Class: *Scharnhorst* class
Commissioned: 6 March 1908
Fate: Sunk at the Battle of the Falkland Islands,
8 December 1914

Period of Use on this Ship:

- 10 November 1910 to 31 July 1914

Approximate Period of Use in D-NG:

- July 1913



SMS Gneisenau II

German New Guinea

Deutsch-Neuguinea



Marine-Schiffspost Postmarks

MSP No. 28



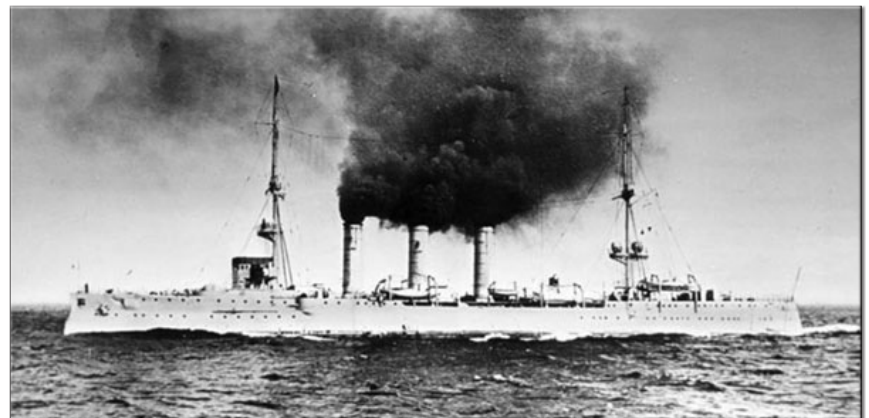
SMS Emden

Type: Light cruiser
Class: *Dresden* class
Commissioned: 10 July 1909
Fate: Disabled by *HMAS Sydney* and grounded
off the Cocos Islands, 9 November 1914

Period of Use on this Ship:
• 9 April 1910 to 31 July 1914

Approximate Periods of Use in D-NG:
• August 1910 to September 1910
• July 1913

These are the possible periods of use in D-NG waters.
At present, no copies of this cancel used in D-NG
waters during these periods are known to exist.



SMS Emden

German New Guinea

Deutsch-Neuguinea



Marine-Schiffspost Postmarks

MSP No. 29



Manila

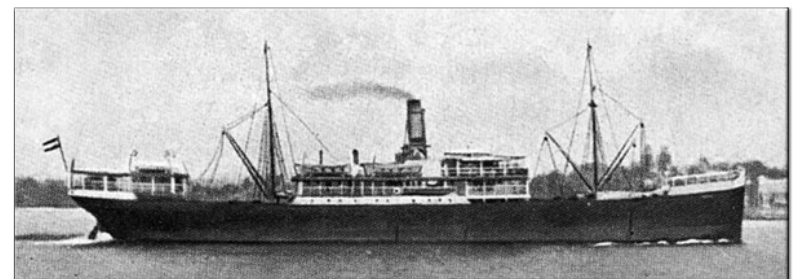
Type: Scheduled civilian steamer (NDL)
Launched: 18 January 1904
Fate: Interned at Ambon Island, Dutch East Indies, August 1914;
Seized by the British, 1919

Period of Use on this Ship:
• 3 December 1908 to 1 January 1909

Approximate Period of Use in D-NG:
• December 1908

Notes:
• Transporting relief crew then relieved crew of *SMS Planet*

This is the possible period of use in D-NG waters. At present, no copies of this cancel used in D-NG waters during this period are known to exist.



Manila

German New Guinea

Deutsch-Neuguinea



Marine-Schiffspost Postmarks

MSP No. 45

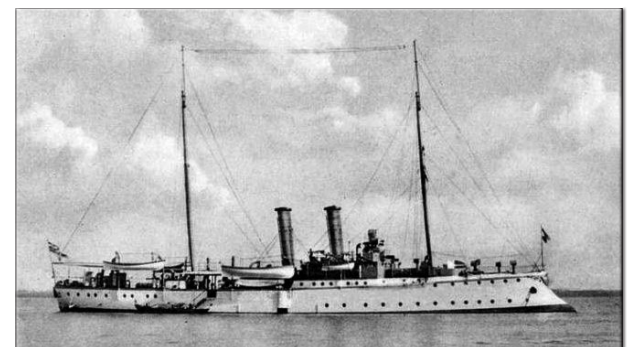


SMS Jaguar

Type: Gunboat
Class: *Iltis* class
Commissioned: 4 April 1899
Fate: Scuttled at Kiautschou, 7 November 1914

Period of Use on this Ship:
• 23 May 1899 to 31 July 1914

Approximate Periods of Use in D-NG:
• September 1899
• November 1908
• December 1908
• March 1909



SMS Jaguar

German New Guinea

Deutsch-Neuguinea



Marine-Schiffspost Postmarks

MSP No. 46



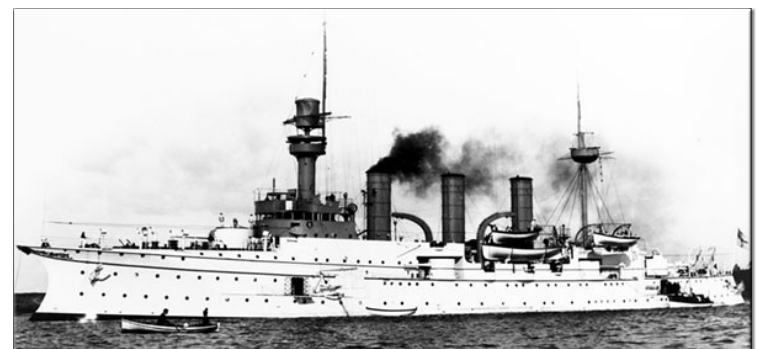
SMS Hansa II

Type: Protected cruiser
Class: *Victoria Louise* class
Commissioned: 20 April 1899
Fate: Decommissioned, 16 November 1914

Period of Use on this Ship:
• 16 August 1899 to 12 October 1906

Approximate Period of Use in D-NG:
• June 1901

Notes:
• Primarily feldpost during the Boxer Rebellion



SMS Hansa II

German New Guinea

Deutsch-Neuguinea



Marine-Schiffspost Postmarks

MSP No. 49



Coblenz I

Type: Scheduled civilian steamer (NDL)
Launched: 18 March 1897
Fate: Interned at Manila, August 1914;
Seized by the USA, 1917

Period of Use on this Ship:

- 1 December 1911 to 26 December 1911

Approximate Period of Use in D-NG:

- December 1911

Notes:

- Transporting relief crew then relieved crew of *SMS Planet*

This is the possible period of use in D-NG waters. At present, no copies of this cancel used in D-NG waters during this period are known to exist.



Coblenz I

German New Guinea

Deutsch-Neuguinea



Marine-Schiffspost Postmarks

MSP No. 60



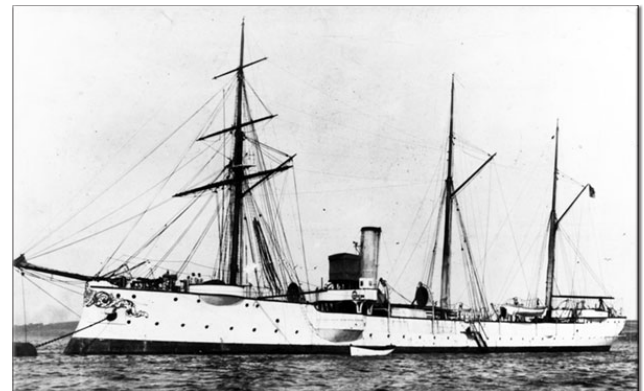
SMS Condor

Type: Unprotected cruiser
Class: *Bussard* class
Commissioned: 9 December 1892
Fate: Decommissioned, 30 March 1914

Period of Use on this Ship:
• 11 April 1903 to 20 March 1914

Approximate Periods of Use in D-NG:

• March 1904 to April 1904	• January 1910 to March 1910
• February 1905 to March 1905	• September 1910 to November 1910
• January 1906 to February 1906	• February 1911
• July 1906 to August 1906	• December 1911 to February 1912
• January 1908 to February 1908	• August 1912 to September 1912
• December 1908 to February 1909	• November 1912 to February 1913
• November 1909 to December 1909	• July 1913 to October 1913



SMS Condor

German New Guinea

Deutsch-Neuguinea



Marine-Schiffspost Postmarks

MSP No. 63



SMS Planet

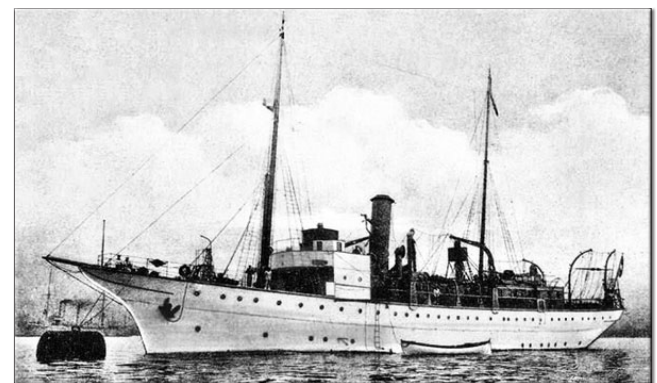
Type: Survey ship
Class: *Planet* class
Commissioned: 16 November 1905
Fate: Scuttled at Yap, Karolinen, 7 October 1914

Period of Use on this Ship:

- 7 December 1905 to 31 July 1914

Approximate Periods of Use in D-NG:

- | | |
|----------------------------------|----------------------------------|
| • September 1906 to January 1907 | • November 1910 to December 1910 |
| • May 1907 to March 1908 | • March 1911 |
| • July 1908 to March 1909 | • June 1911 to January 1912 |
| • July 1909 to August 1909 | • June 1912 to March 1913 |
| • September 1909 to March 1910 | • July 1913 to January 1914 |
| • July 1910 to September 1910 | • June 1914 to July 1914 |



SMS Planet

German New Guinea

Deutsch-Neuguinea



Marine-Schiffspost Postmarks

MSP No. 68



Sandakan

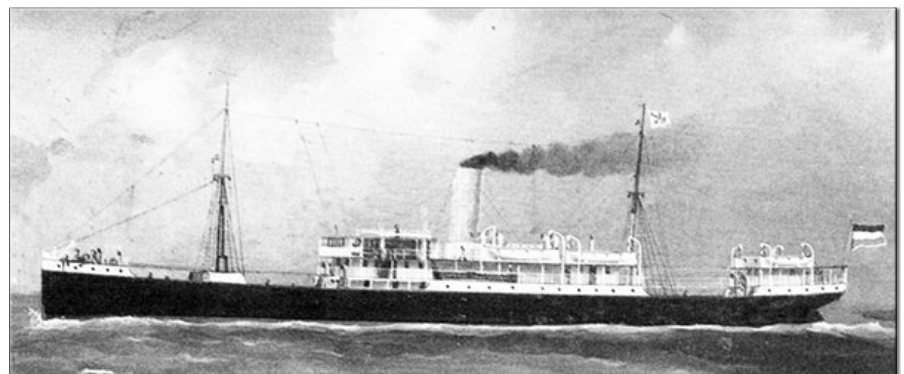
Type: Scheduled civilian steamer (NDL)
Launched: 25 June 1904
Fate: Interned & seized by the British at
Labuan, Straits Settlements, 1914

Period of Use on this Ship:
• 4 December 1906 to 23 December 1906

Approximate Period of Use in D-NG:
• December 1906

Notes:
• Transporting relief crew for *SMS Planet*

This is the possible period of use in D-NG waters.
At present, no copies of this cancel used in D-NG
waters during this period are known to exist.



Sandakan

German New Guinea

Deutsch-Neuguinea



Marine-Schiffspost Postmarks

MSP No. 68



Prinz Sigismund

Type: Scheduled civilian steamer (NDL)

Launched: 12 May 1903

Fate: Interned & seized by the British in Brisbane, August 1914

Period of Use on this Ship:

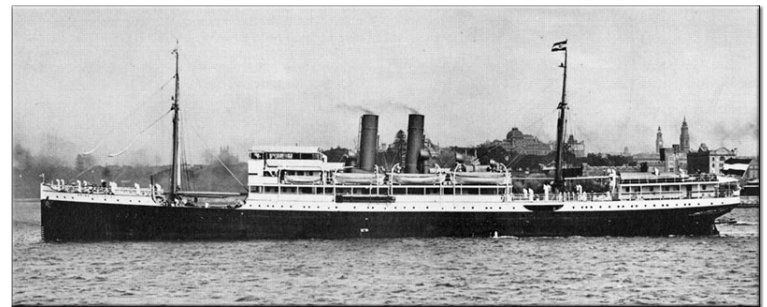
- 23 December 1906 to 2 January 1907

Approximate Period of Use in D-NG:

- December 1906

Notes:

- Transporting crew relieved from *SMS Planet* to Sydney



Prinz Sigismund

German New Guinea

Deutsch-Neuguinea



Marine-Schiffspost Postmarks

MSP No. 86



Coblenz I

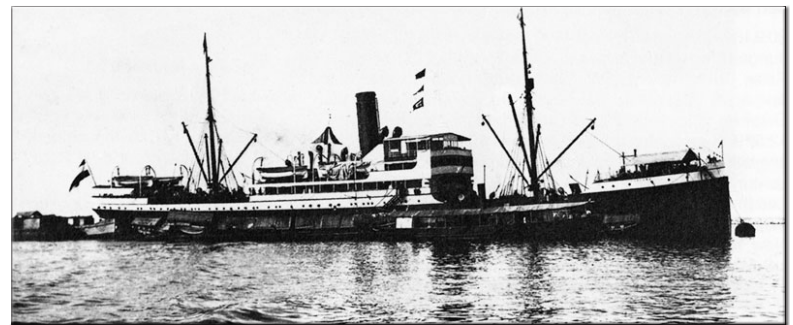
Type: Scheduled civilian steamer (NDL)
Launched: 18 March 1897
Fate: Interned at Manila, August 1914;
Seized by the USA, 1917

Period of Use on this Ship:
• 12 June 1914 to 6 July 1914

Approximate Period of Use in D-NG:
• June 1914

Notes:
• Transporting relief crew then relieved crew of *SMS Planet*

This is the possible period of use in D-NG waters. At present, no copies of this cancel used in D-NG waters during this period are known to exist.



Coblenz I

German New Guinea

Deutsch-Neuguinea



Seepost Postmarks

Neu-Guinea-Zweiglinie

Catalog:

- Friedemann SP 1 a
- ArGe Kolonien DEUTSCHE SEEPOST NEU-GUINEA-ZWEIGLINIE a



Lübeck

Type: Civilian steamer (NDL)

Launched: 8 April 1886

Fate: Sold to Japan, 1895

The Neu-Guinea-Zweiglinie, or New Guinea Branch Line, began its round-trip service from Singapore to Herbertshöhe, Deutsch-Neuguinea, on 27 April 1893.

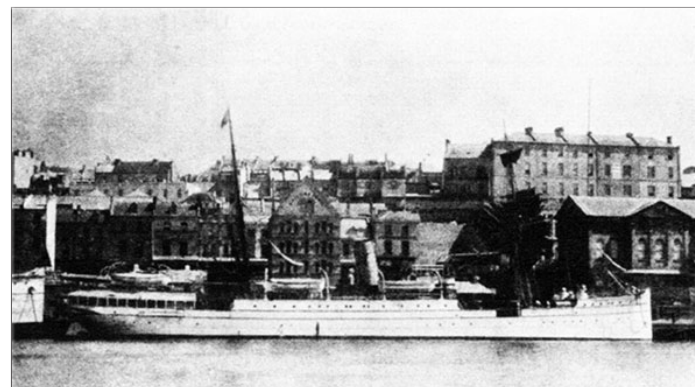
The line was discontinued in mid-1900, though beginning in 1905, the cancellers were re-used on the Austral-Japan-Linie.

Period of Use on this Ship:

- 3 October 1893 to 13 December 1893

Notes:

- During this period, can only be found on German Empire postage



Lübeck

German New Guinea

Deutsch-Neuguinea



Seepost Postmarks

Neu-Guinea-Zweiglinie

Catalog:

- Friedemann SP 1 b
- ArGe Kolonien DEUTSCHE SEEPOST NEU-GUINEA-ZWEIGLINIE b



Lübeck

Type: Civilian steamer (NDL)

Launched: 8 April 1886

Fate: Sold to Japan, 1895

The Neu-Guinea-Zweiglinie, or New Guinea Branch Line, began its round-trip service from Singapore to Herbertshöhe, Deutsch-Neuguinea, on 27 April 1893.

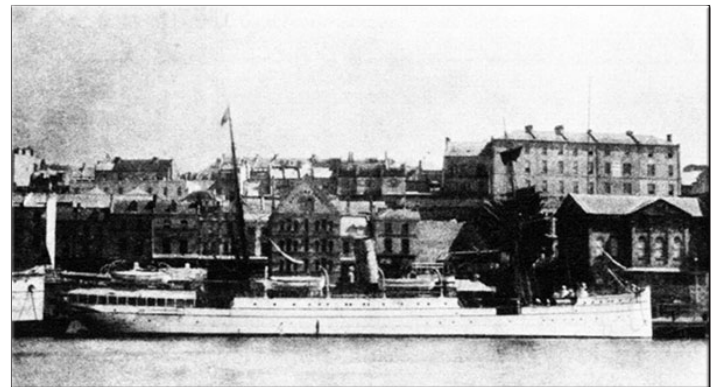
The line was discontinued in mid-1900, though beginning in 1905, the cancellers were re-used on the Austral-Japan-Linie.

Period of Use on this Ship:

- 22 December 1893 to 26 June 1895

Notes:

- During this period, can only be found on German Empire postage



Lübeck

German New Guinea

Deutsch-Neuguinea



Seepost Postmarks

Neu-Guinea-Zweiglinie

Catalog:

- Friedemann SP 1 b
- ArGe Kolonien DEUTSCHE SEEPOST NEU-GUINEA-ZWEIGLINIE b



Stettin

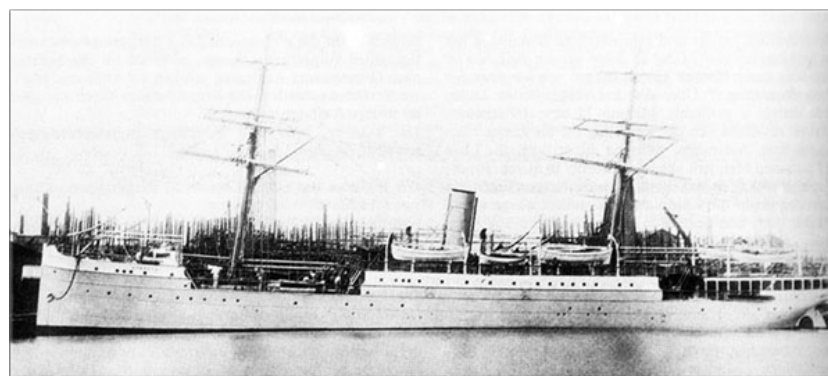
Type: Civilian steamer (NDL)
Launched: 1 April 1886
Fate: Sold to China, 1900

The Neu-Guinea-Zweiglinie, or New Guinea Branch Line, began its round-trip service from Singapore to Herbertshöhe, Deutsch-Neuguinea, on 27 April 1893.

The line was discontinued in mid-1900, though beginning in 1905, the cancellers were re-used on the Austral-Japan-Linie.

Period of Use on this Ship:

- 8 July 1895 to 10 July 1900



Stettin

German New Guinea

Deutsch-Neuguinea



Seepost Postmarks

Neu-Guinea-Zweiglinie (Singapore)

Catalog:

- Friedemann SP 2 a
- ArGe Kolonien DEUTSCHE SEEPOST NEU-GUINEA-ZWEIGLINIE (SINGAPORE) a



Stettin

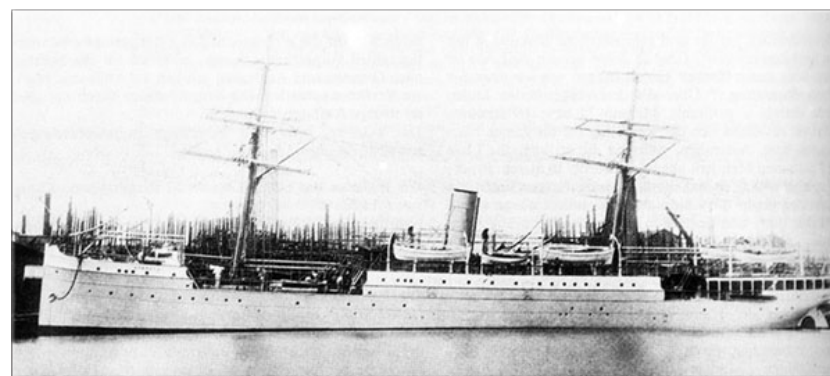
Type: Civilian steamer (NDL)
Launched: 1 April 1886
Fate: Sold to China, 1900

The Neu-Guinea-Zweiglinie (Singapore), or New Guinea Branch Line (Singapore), was a successor to the Neu-Guinea-Zweiglinie, extending the Singapore-Neuguinea route to Sydney.

Service began on 20 July 1900 and continued until January 1905.

Period of Use on this Ship:

- 20 July 1900 to 9 March 1902



Stettin

German New Guinea

Deutsch-Neuguinea



Seepost Postmarks

Neu-Guinea-Zweiglinie (Singapore)

Catalog:

- Friedemann SP 2 a
- ArGe Kolonien DEUTSCHE SEEPOST NEU-GUINEA-ZWEIGLINIE (SINGAPORE) a



Tanglin

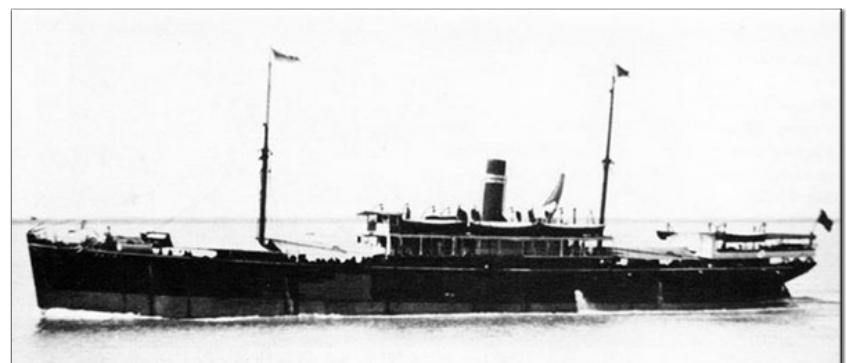
Type: Civilian steamer (NDL)
Launched: 23 October 1900
Fate: Sold to India, 1906

The Neu-Guinea-Zweiglinie (Singapore), or New Guinea Branch Line (Singapore), was a successor to the Neu-Guinea-Zweiglinie, extending the Singapore-Neuguinea route to Sydney.

Service began on 20 July 1900 and continued until January 1905.

Periods of Use on this Ship:

- 17 March 1902 to 3 May 1903
- 2 August 1903 to 18 October 1903



Paknam, sister ship of *Tanglin* (no photo available)

German New Guinea

Deutsch-Neuguinea



Seepost Postmarks

Neu-Guinea-Zweiglinie (Singapore)

Catalog:

- Friedemann SP 2 a
- ArGe Kolonien DEUTSCHE SEEPOST NEU-GUINEA-ZWEIGLINIE (SINGAPORE) a



Deli

Type: Civilian steamer (NDL)

Launched: 23 November 1899

Fate: Interned at Bangkok, Thailand, August 1914;
Seized by Siam, 22 July 1917

The Neu-Guinea-Zweiglinie (Singapore), or New Guinea Branch Line (Singapore), was a successor to the Neu-Guinea-Zweiglinie, extending the Singapore-Neuguinea route to Sydney.

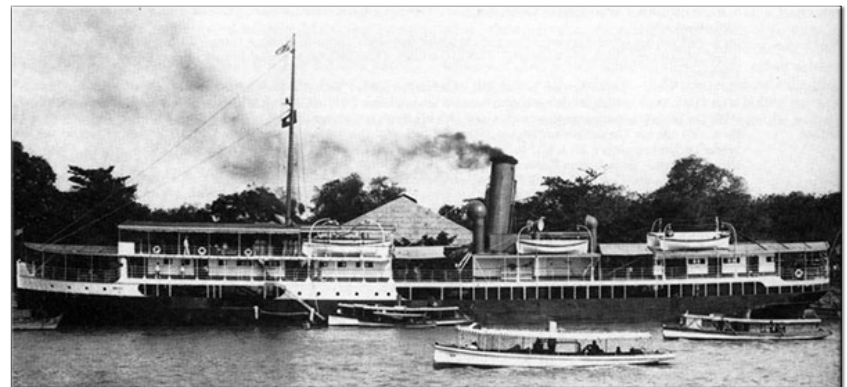
Service began on 20 July 1900 and continued until January 1905.

Period of Use on this Ship:

- 12 May 1903 to 26 July 1903

Notes:

- Violet ink on 16 May 1903



Deli

German New Guinea

Deutsch-Neuguinea



Seepost Postmarks

Neu-Guinea-Zweiglinie (Singapore)

Catalog:

- Friedemann SP 2 a
- ArGe Kolonien DEUTSCHE SEEPOST NEU-GUINEA-ZWEIGLINIE (SINGAPORE) a



Prinz Sigismund

Type: Civilian steamer (NDL)

Launched: 12 May 1903

Fate: Interned & seized by the British, Brisbane, August 1914

The Neu-Guinea-Zweiglinie (Singapore), or New Guinea Branch Line (Singapore), was a successor to the Neu-Guinea-Zweiglinie, extending the Singapore-Neuguinea route to Sydney.

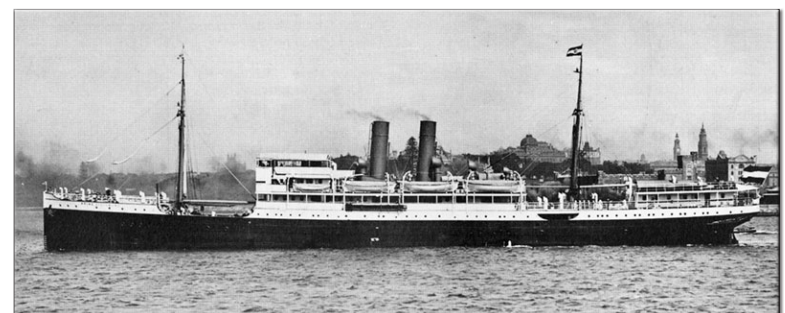
Service began on 20 July 1900 and continued until January 1905.

Period of Use on this Ship:

- 23 October 1903 to 4 January 1905

Notes:

- 4 May 1905 cancels are erroneous (4 January 1905)



Prinz Sigismund

German New Guinea

Deutsch-Neuguinea



Seepost Postmarks

Neu-Guinea-Zweiglinie (Singapore)

Catalog:

- Friedemann SP 2 b
- ArGe Kolonien DEUTSCHE SEEPOST NEU-GUINEA-ZWEIGLINIE (SINGAPORE) b



Stettin

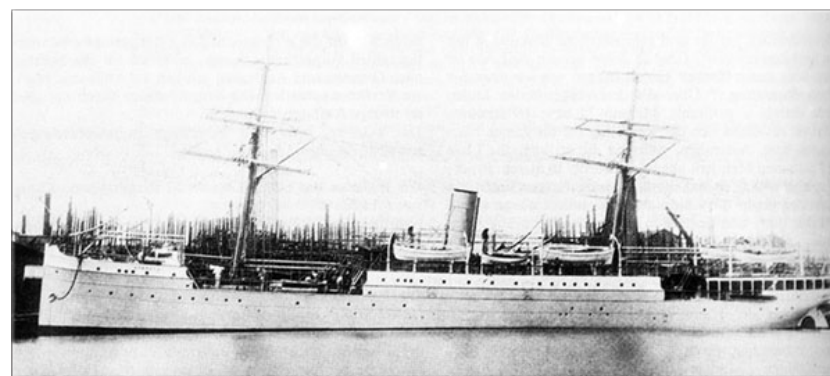
Type: Civilian steamer (NDL)
Launched: 1 April 1886
Fate: Sold to China, 1900

The Neu-Guinea-Zweiglinie (Singapore), or New Guinea Branch Line (Singapore), was a successor to the Neu-Guinea-Zweiglinie, extending the Singapore-Neuguinea route to Sydney.

Service began on 20 July 1900 and continued until January 1905.

Period of Use on this Ship:

- 25 April 1902 to 6 September 1903



Stettin

German New Guinea

Deutsch-Neuguinea



Seepost Postmarks

Neu-Guinea-Zweiglinie (Singapore)

Catalog:

- Friedemann SP 2 b
- ArGe Kolonien DEUTSCHE SEEPOST NEU-GUINEA-ZWEIGLINIE (SINGAPORE) b



Prinz Waldemar

Type: Civilian steamer (NDL)

Launched: 3 June 1903

Fate: Interned in Honolulu, 1914;

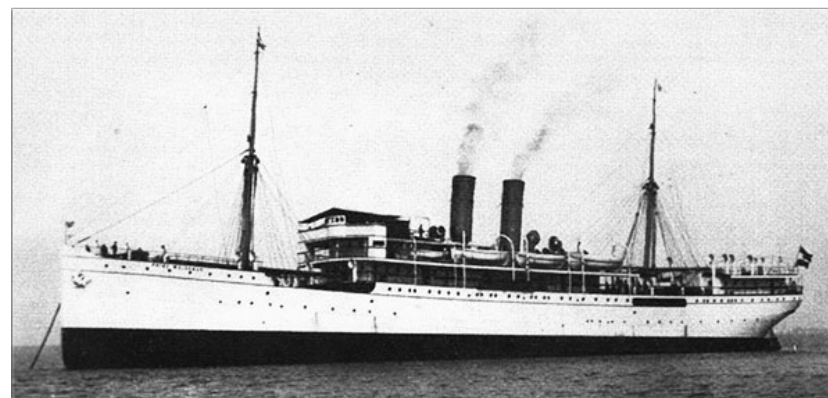
Seized by the USA, 6 April 1917

The Neu-Guinea-Zweiglinie (Singapore), or New Guinea Branch Line (Singapore), was a successor to the Neu-Guinea-Zweiglinie, extending the Singapore-Neuguinea route to Sydney.

Service began on 20 July 1900 and continued until January 1905.

Period of Use on this Ship:

- 11 September 1903 to 1 February 1905



Prinz Waldemar

German New Guinea

Deutsch-Neuguinea



Seepost Postmarks

Neu-Guinea-Zweiglinie (Hongkong)

Catalog:

- Friedemann SP 3
- ArGe Kolonien DEUTSCHE SEEPOST NEU-GUINEA-ZWEIGLINIE (HONGKONG) a



München

Type: Civilian steamer (NDL)
Launched: 23 January 1889
Fate: Sold to China, 1905

The Neu-Guinea-Zweiglinie (Hongkong), or New Guinea Branch Line (Hong Kong), ran from Hong Kong to Sydney via the German colonies of Marianen, Karolinen, and Deutsch-Neuguinea.

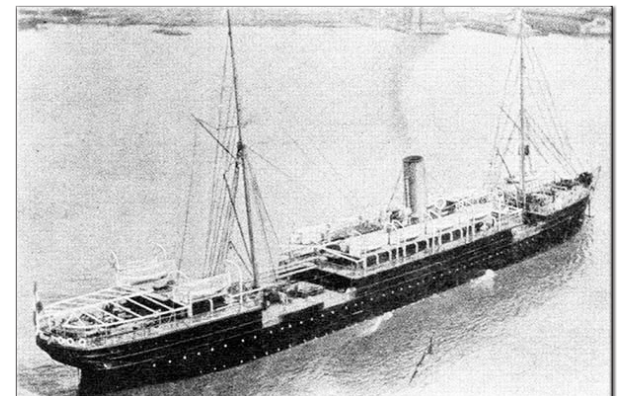
The service ran from July 1900 to December 1901.

Period of Use on this Ship:

- 27 July 1900 to 3 February 1901

Notes:

- No "01" year slug until 7 January 1901



München

German New Guinea

Deutsch-Neuguinea



Seepost Postmarks

Neu-Guinea-Zweiglinie (Hongkong)

Catalog:

- Friedemann SP 3
- ArGe Kolonien DEUTSCHE SEEPOST NEU-GUINEA-ZWEIGLINIE (HONGKONG) a



Nuen-Tung

Type: Civilian steamer (NDL)

Launched: 21 May 1900

Fate: Sold to the Philippines, 1913

The Neu-Guinea-Zweiglinie (Hongkong), or New Guinea Branch Line (Hong Kong), ran from Hong Kong to Sydney via the German colonies of Marianen, Karolinen, and Deutsch-Neuguinea.

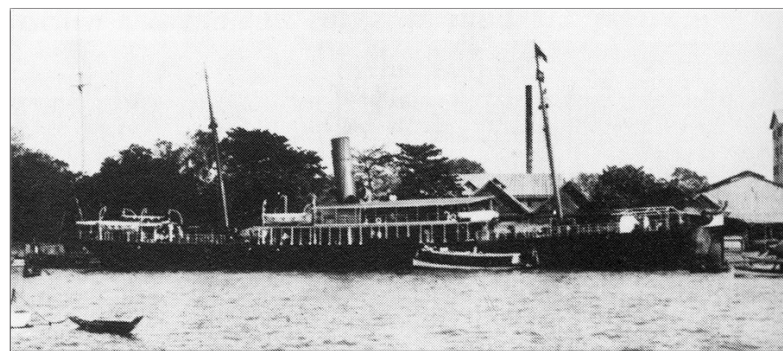
The service ran from July 1900 to December 1901.

Period of Use on this Ship:

- 3 April 1901 to 24 January 1902

Notes:

- “01” year hand-corrected to “02” until 24 January 1902



Nuen-Tung

German New Guinea

Deutsch-Neuguinea



Seepost Postmarks

Neu-Guinea-Zweiglinie (Hongkong)

Catalog:

- Friedemann SP 3
- ArGe Kolonien DEUTSCHE SEEPOST NEU-GUINEA-ZWEIGLINIE (HONGKONG) a



Paknam

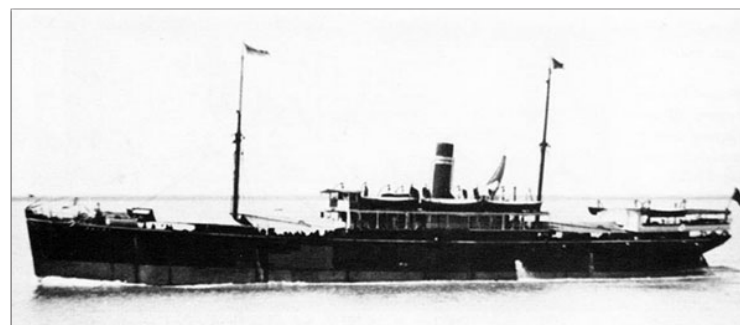
Type: Civilian steamer (NDL)
Launched: 6 October 1900
Fate: Sold to India, 1908

The Neu-Guinea-Zweiglinie (Hongkong), or New Guinea Branch Line (Hong Kong), ran from Hong Kong to Sydney via the German colonies of Marianen, Karolinen, and Deutsch-Neuguinea.

The service ran from July 1900 to December 1901.

Period of Use on this Ship:

- 1 February 1902 to 25 April 1902



Paknam

German New Guinea

Deutsch-Neuguinea



Seepost Postmarks

Sydney - Jaluit - Yap Linie

Catalog:

- Friedemann: Not listed for D-NG
- ArGe Kolonien DEUTSCHE SEEPOST SYDNEY-JALUIT-YAP



Oceana

Type: Civilian steamer (Jaluit Gesellschaft)

Launched: 1891 as *Harold*

Fate: Sold to Australia, 1905

The Jaluit-Gesellschaft's Sydney-Jaluit-Yap Linie was instituted on 1 January 1901 to connect the colonies of Karolinen and Marianen with the main German lines terminating in Australia and East Asia.

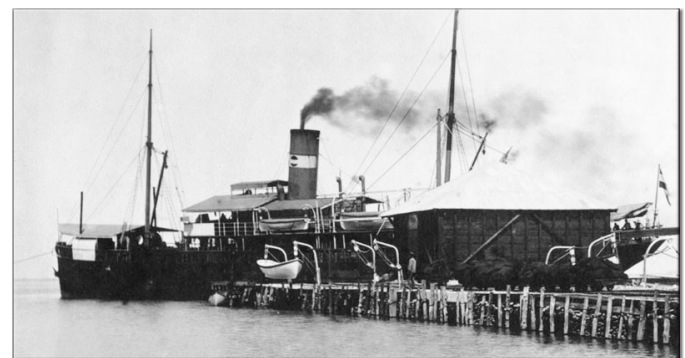
Following the cancellation of the Neu-Guinea-Zweiglinie (Hongkong) route in November 1901, the terminus of the Sydney-Jaluit-Yap Linie was extended in January 1902 from Yap to Hong Kong, with a stop in Herbertshöhe, Deutsch-Neuguinea, every 16 weeks on the return voyage.

Period of Use on this Ship:

- 15 January 1901 to 29 June 1902

Notes:

- Only possible uses in D-NG are from January 1902 to June 1902



Oceana

German New Guinea

Deutsch-Neuguinea



Seepost Postmarks

Sydney - Hongkong Linie

Catalog:

- Friedemann SP 4
- ArGe Kolonien DEUTSCHE SEEPOST SYDNEY-HONGKONG a



Oceana

Type: Civilian steamer (Jaluit Gesellschaft)

Launched: 1891 as *Harold*

Fate: Sold to Australia, 1905

In June 1902, a new canceller was introduced on the Sydney-Jaluit-Yap Linie reflecting the new terminus of the route in Hong Kong.

In 1902, the ships of the line stopped in Herbertshöhe, Deutsch-Neuguinea, every 16 weeks on the return voyage.

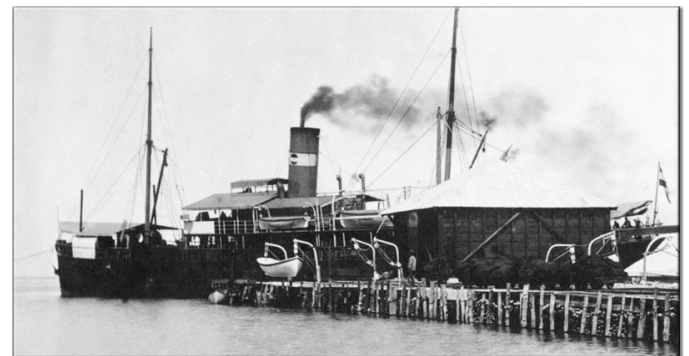
The line was renamed the Jaluit-Linie in early 1905.

Period of Use on this Ship:

- 11 July 1902 to 21 January 1904

Notes:

- Only possible uses in D-NG are from 1902



Oceana

German New Guinea

Deutsch-Neuguinea



Seepost Postmarks

Austral-Japan-Linie

Catalog:

- Friedemann: mentioned as unauthorized, but not listed
- ArGe Kolonien D. WILLEHAD NDL BREMEN



Willehad

Type: Civilian steamer (NDL)

Launched: 21 March 1894

Fate: Interned in Boston, August 1914;
Seized by the USA, 1917

In late 1904 or early 1905, Norddeutscher-Lloyd resumed the Neu-Guinea-Zweiglinie, which had been discontinued in mid-1900, as the Austral-Japan-Linie. This line would run until the outbreak of World War I.

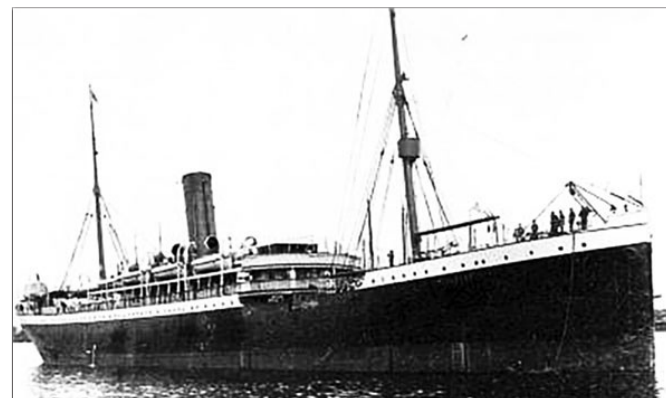
Prior to the reintroduction of the previous Neu-Guinea-Zweiglinie cancellers, the steamer *Willehad* used provisional cancels on mail carried on the route.

Period of Use on this Ship:

- 29 January 1905 to 27 April 1905

Notes:

- Blue or black ink



Willehad

German New Guinea

Deutsch-Neuguinea



Seepost Postmarks

Austral-Japan-Linie

Catalog:

- Friedemann: mentioned as unauthorized, but not listed
- ArGe Kolonien Reichspostdampfer "WILLEHAD"

Reichspostdampfer
„WILLEHAD“

26 MAI 1905

Willehad

Type: Civilian steamer (NDL)

Launched: 21 March 1894

Fate: Interned in Boston, August 1914;
Seized by the USA, 1917

In late 1904 or early 1905, Norddeutscher-Lloyd resumed the Neu-Guinea-Zweiglinie, which had been discontinued in mid-1900, as the Austral-Japan-Linie. This line would run until the outbreak of World War I.

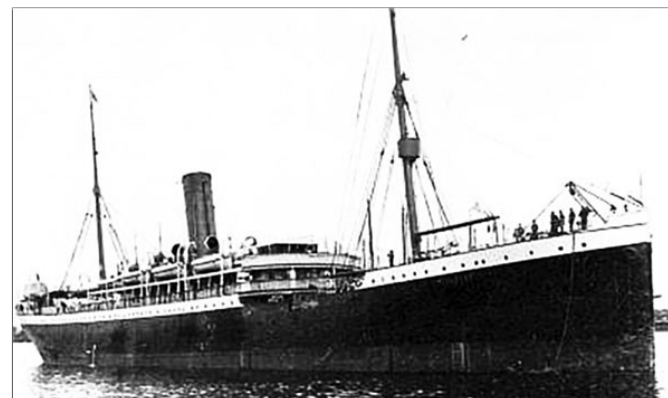
Prior to the reintroduction of the previous Neu-Guinea-Zweiglinie cancellers, the steamer *Willehad* used provisional cancels on mail carried on the route.

Period of Use on this Ship:

- 24 May 1905 to 26 May 1905

Notes:

- Blue ink



Willehad

German New Guinea

Deutsch-Neuguinea



Seepost Postmarks

Austral-Japan-Linie

Catalog:

- Friedemann SP 1 I a / SP 5 a
- ArGe Kolonien DEUTSCHE SEEPOST NEU-GUINEA-ZWEIGLINIE a



Willehad

Type: Civilian steamer (NDL)

Launched: 21 March 1894

Fate: Interned in Boston, August 1914;

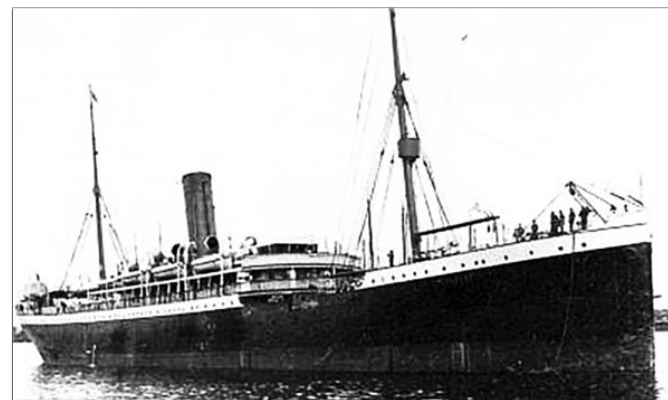
Seized by the USA, 1917

In late 1904 or early 1905, Norddeutscher-Lloyd resumed the Neu-Guinea-Zweiglinie, which had been discontinued in mid-1900, as the Austral-Japan-Linie. This line would run until the outbreak of World War I.

In 1905, the previously retired “a” and “b” cancellers were reintroduced for use.

Period of Use on this Ship:

- June 1905 to 5 December 1906



Willehad

German New Guinea

Deutsch-Neuguinea



Seepost Postmarks

Austral-Japan-Linie

Catalog:

- Friedemann SP 1 I a / SP 5 a
- ArGe Kolonien DEUTSCHE SEEPOST NEU-GUINEA-ZWEIGLINIE a



Manila

Type: Civilian steamer (NDL)

Launched: 18 January 1904

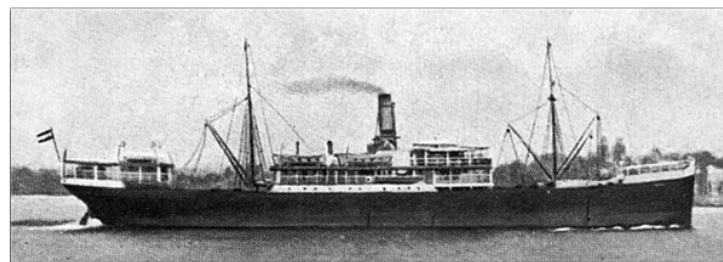
Fate: Interned at Ambon Island, Dutch East Indies, August 1914;
Seized by the British, 1919

In late 1904 or early 1905, Norddeutscher-Lloyd resumed the Neu-Guinea-Zweiglinie, which had been discontinued in mid-1900, as the Austral-Japan-Linie. This line would run until the outbreak of World War I.

In 1905, the previously retired “a” and “b” cancellers were reintroduced for use.

Period of Use on this Ship:

- 21 December 1906 to 11 August 1909



Manila

German New Guinea

Deutsch-Neuguinea



Seepost Postmarks

Austral-Japan-Linie

Catalog:

- Friedemann SP 1 I a / SP 5 a
- ArGe Kolonien DEUTSCHE SEEPOST NEU-GUINEA-ZWEIGLINIE a



Coblenz I

Type: Civilian steamer (NDL)

Launched: 18 March 1897

Fate: Interned at Manila, August 1914;

Seized by the USA, 1917

In late 1904 or early 1905, Norddeutscher-Lloyd resumed the Neu-Guinea-Zweiglinie, which had been discontinued in mid-1900, as the Austral-Japan-Linie. This line would run until the outbreak of World War I.

In 1905, the previously retired “a” and “b” cancellers were reintroduced for use.

Period of Use on this Ship:

- 13 August 1909 to 18 August 1914

Notes:

- Violet ink in 1911, 1913, 1914



Coblenz I

German New Guinea

Deutsch-Neuguinea



Seepost Postmarks

Austral-Japan-Linie

Catalog:

- Friedemann SP 1 I b / SP 5 b
- ArGe Kolonien DEUTSCHE SEEPOST NEU-GUINEA-ZWEIGLINIE b



Prinz Waldemar

Type: Civilian steamer (NDL)

Launched: 3 June 1903

Fate: Interned in Honolulu, 1914;

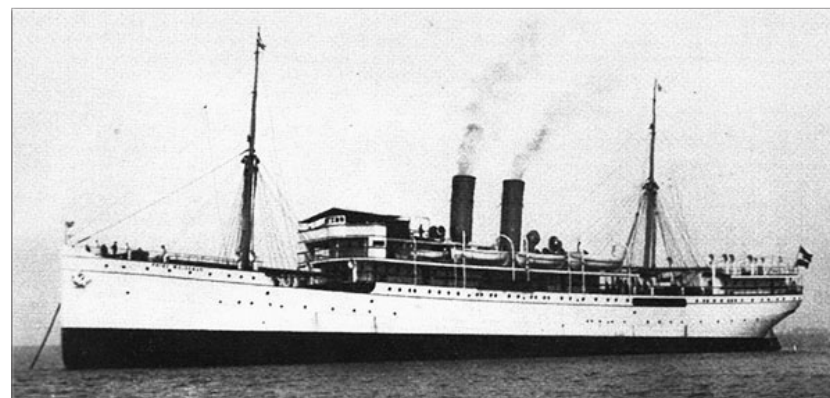
Seized by the USA, 6 April 1917

In late 1904 or early 1905, Norddeutscher-Lloyd resumed the Neu-Guinea-Zweiglinie, which had been discontinued in mid-1900, as the Austral-Japan-Linie. This line would run until the outbreak of World War I.

In 1905, the previously retired “a” and “b” cancellers were reintroduced for use.

Period of Use on this Ship:

- 3 February 1905 to October 1907



Prinz Waldemar

German New Guinea

Deutsch-Neuguinea



Seepost Postmarks

Austral-Japan-Linie

Catalog:

- Friedemann SP 1 I b / SP 5 b
- ArGe Kolonien DEUTSCHE SEEPOST NEU-GUINEA-ZWEIGLINIE b



Prinz Sigismund

Type: Civilian steamer (NDL)

Launched: 12 May 1903

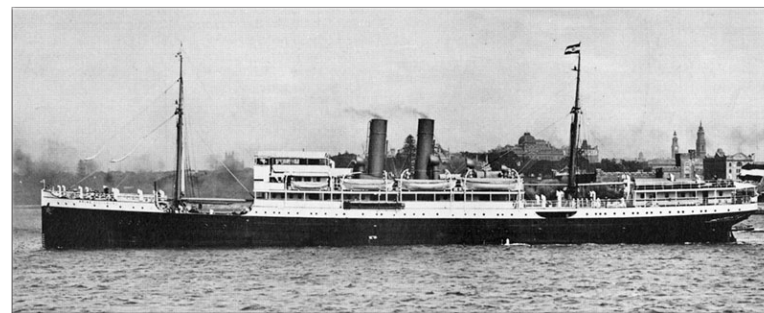
Fate: Interned & seized by the British, Brisbane, August 1914

In late 1904 or early 1905, Norddeutscher-Lloyd resumed the Neu-Guinea-Zweiglinie, which had been discontinued in mid-1900, as the Austral-Japan-Linie. This line would run until the outbreak of World War I.

In 1905, the previously retired “a” and “b” cancellers were reintroduced for use.

Period of Use on this Ship:

- 8 May 1908 to 3 August 1914



Prinz Sigismund

German New Guinea

Deutsch-Neuguinea



Seepost Postmarks

Austral-Japan-Linie

Catalog:

- Friedemann SP 5 c
- ArGe Kolonien DEUTSCHE SEEPOST NEU-GUINEA-ZWEIGLINIE c



Prinz Sigismund

Type: Civilian steamer (NDL)

Launched: 12 May 1903

Fate: Interned & seized by the British, Brisbane, August 1914

In late 1904 or early 1905, Norddeutscher-Lloyd resumed the Neu-Guinea-Zweiglinie, which had been discontinued in mid-1900, as the Austral-Japan-Linie. This line would run until the outbreak of World War I.

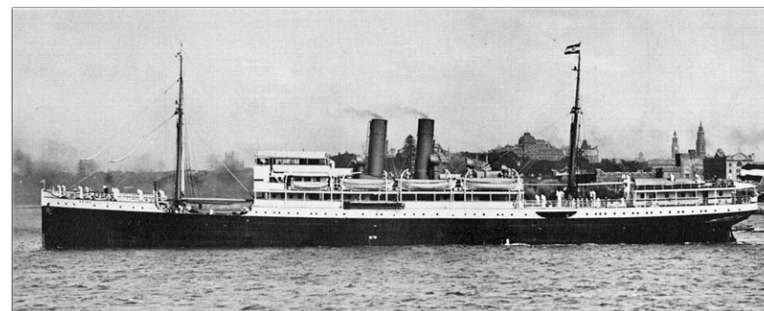
In 1905, a new cancel with a slightly different design and letter "c" was introduced.

Period of Use on this Ship:

- April 1905 to 22 March 1907

Notes:

- Provisional year date "06" in 1906



Prinz Sigismund

German New Guinea

Deutsch-Neuguinea



Seepost Postmarks

Austral-Japan-Linie

Catalog:

- Friedemann SP 5 c
- ArGe Kolonien DEUTSCHE SEEPOST NEU-GUINEA-ZWEIGLINIE c



Prinz Waldemar

Type: Civilian steamer (NDL)

Launched: 3 June 1903

Fate: Interned in Honolulu, 1914;
Seized by the USA, 6 April 1917

In late 1904 or early 1905, Norddeutscher-Lloyd resumed the Neu-Guinea-Zweiglinie, which had been discontinued in mid-1900, as the Austral-Japan-Linie. This line would run until the outbreak of World War I.

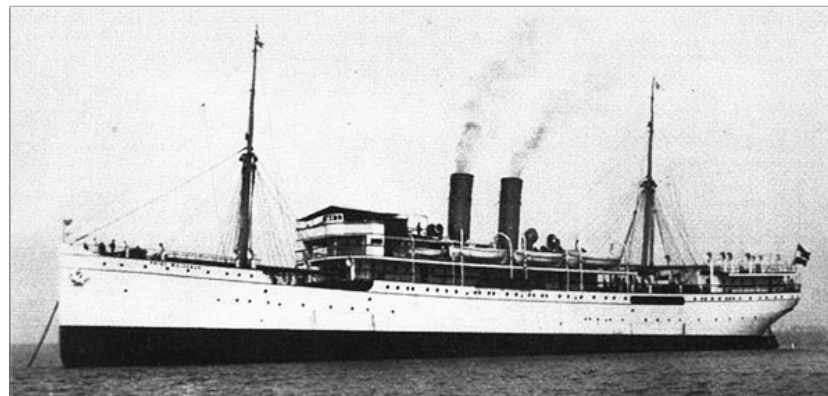
In 1905, a new cancel with a slightly different design and letter "c" was introduced.

Period of Use on this Ship:

- 10 April 1907 to 30 July 1914

Notes:

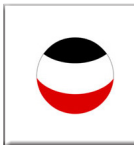
- Violet ink, 1911-1913



Prinz Waldemar

German New Guinea

Deutsch-Neuguinea



Seepost Postmarks

Jaluit-Linie

Catalog:

- Friedemann SP 6
- ArGe Kolonien DEUTSCHE SEEPOST JALUIT-LINIE b



Germania

Type: Civilian steamer (Jaluit Gesellschaft)

Launched: 1904

Fate: Interned & seized by Australia in Sydney, August 1914

In early 1905, the Jaluit Gesellschaft extended its Sydney-Hongkong Linie to Deutsch-Neuguinea. In conjunction with this change, the line was renamed the Jaluit-Linie.

The "a" canceller was assigned to the *Oceana*, but she ran aground off Jaluit before it could be used.

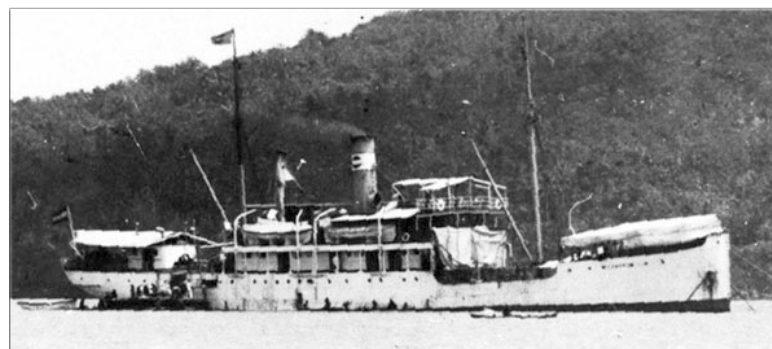
The "b" canceller was thus assigned to her successor, *Germania*.

Period of Use on this Ship:

- February 1905 to 30 July 1914

Notes:

- Violet ink, 1905-1907, 1912-1914



Germania

German New Guinea

Deutsch-Neuguinea



Seepost Postmarks

Singapore - Deutsch-Neuguinea Linie

Catalog:

- Friedemann SP 7
- ArGe Kolonien DEUTSCHE SEEPOST SINGAPORE DEUTSCH-NEUGUINEA



Manila

Type: Civilian steamer (NDL)

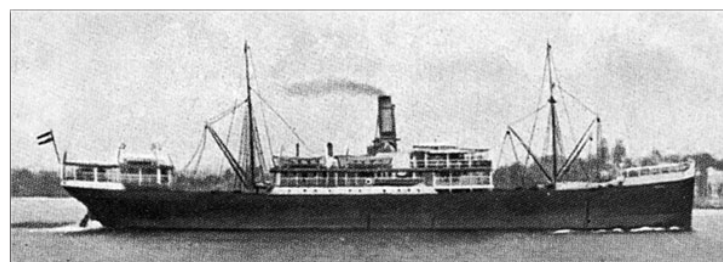
Launched: 18 January 1904

Fate: Interned at Ambon Island, Dutch East Indies, August 1914;
Seized by the British, 1919

In April 1909, the Neu-Guinea-Zweiglinie (Singapore) resumed operations as the Singapore - Deutsch-Neuguinea Linie. Two new cancellers were used — one for mail transported in the Singapore to Deutsch-Neuguinea direction, and the other for the reverse. The line ran until the outbreak of World War I.

Period of Use on this Ship:

- February 1910 to 20 July 1914



Manila

German New Guinea

Deutsch-Neuguinea



Seepost Postmarks

Singapore - Deutsch-Neuguinea Linie

Catalog:

- Friedemann SP 8
- ArGe Kolonien DEUTSCHE SEEPOST DEUTSCH-NEUGUINEA-SINGAPORE



Manila

Type: Civilian steamer (NDL)

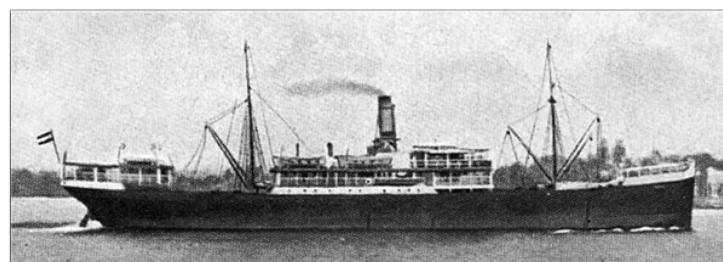
Launched: 18 January 1904

Fate: Interned at Ambon Island, Dutch East Indies, August 1914;
Seized by the British, 1919

In April 1909, the Neu-Guinea-Zweiglinie (Singapore) resumed operations as the Singapore - Deutsch-Neuguinea Linie. Two new cancellers were used — one for mail transported in the Singapore to Deutsch-Neuguinea direction, and the other for the reverse. The line ran until the outbreak of World War I.

Period of Use on this Ship:

- February 1910 to 9 August 1914



Manila

German New Guinea

Deutsch-Neuguinea



Seepost Postmarks

Deutsch-Neuguinea Inselfahrt

Catalog:

- Friedemann E 1
- ArGe Kolonien Dampfer Siar



Siar

Type: Civilian steamer (Neuguinea-Kompagnie / NDL)

Launched: 1902

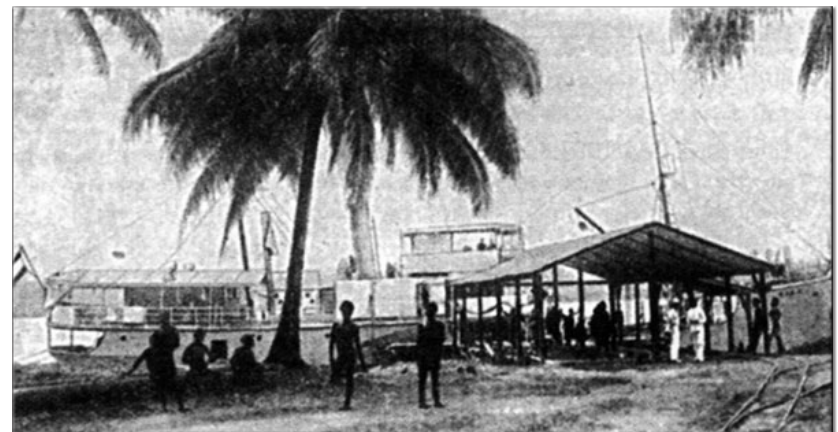
Fate: Captured by *HMAS Nusa* at Gardner Island,
Deutsch-Neuguinea, 18 September 1914

During the period from 1903 to 1911, the steamer *Siar*, which provided inter-island transport for the Neuguinea-Kompagnie, also carried mail to and from islands that weren't served by official mail steamers.

The mail was cancelled "Siar" via handwriting or a handstamp, then normally received a Deutsch-Neuguinea postal cancel at the first official post office it transited.

Period of Use on this Ship:

- 1903 to 1911



Siar

German New Guinea

Deutsch-Neuguinea



Seepost Postmarks

Deutsch-Neuguinea Inselfahrt

Catalog:

- Friedemann E 2
- ArGe Kolonien Dampfer Siar



Siar

Type: Civilian steamer (Neuguinea-Kompagnie / NDL)

Launched: 1902

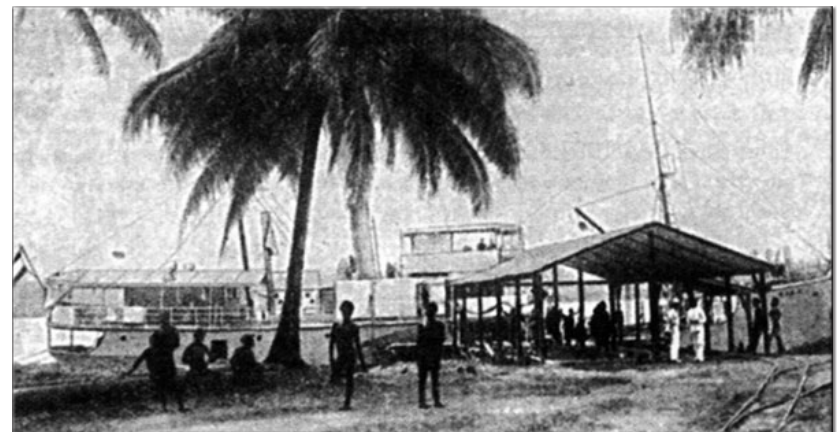
Fate: Captured by *HMAS Nusa* at Gardner Island,
Deutsch-Neuguinea, 18 September 1914

During the period from 1903 to 1911, the steamer *Siar*, which provided inter-island transport for the Neuguinea-Kompagnie, also carried mail to and from islands that weren't served by official mail steamers.

The mail was cancelled "Siar" via handwriting or a handstamp, then normally received a Deutsch-Neuguinea postal cancel at the first official post office it transited.

Period of Use on this Ship:

- 1903 to 1911



Siar

German New Guinea

Deutsch-Neuguinea



Seepost Postmarks

Deutsch-Neuguinea Inselfahrt

Catalog:

- Friedemann Unlisted
- ArGe Kolonien KGS Komet



Komet

Type: Government steam yacht

Launched: 6 April 1911

Fate: Captured by *HMAS Nusa*, 11 October 1914

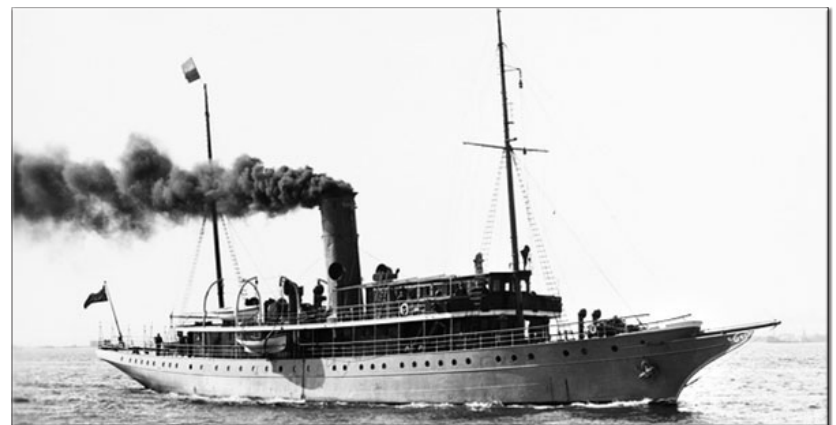
For a period during 1912, the yacht *Komet* was used for mail delivery within the islands on an ad hoc basis.

Mail transported on the yacht typically received either a handwritten or handstamped cancellation.

These cancellations were unauthorized, and mail containing these markings was sometimes tolerated and at other times rejected by subsequent postal authorities.

Period of Use on this Ship:

- January 1912 to March 1912



Komet, while in Australian service as *HMAS Una*

German New Guinea

Deutsch-Neuguinea

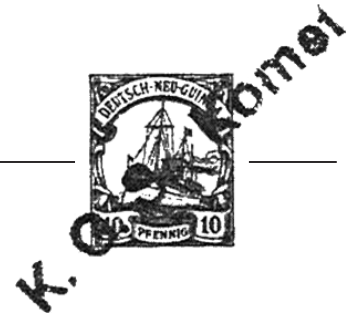


Seepost Postmarks

Deutsch-Neuguinea Inselfahrt

Catalog:

- Friedemann Unlisted
- ArGe Kolonien KGS Komet



Komet

Type: Government steam yacht

Launched: 6 April 1911

Fate: Captured by *HMAS Nusa*, 11 October 1914

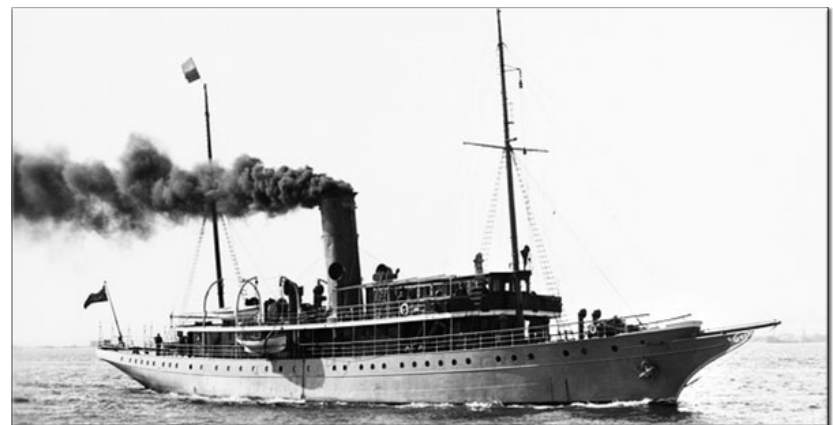
For a period during 1912, the yacht *Komet* was used for mail delivery within the islands on an ad hoc basis.

Mail transported on the yacht typically received either a handwritten or handstamped cancellation.

These cancellations were unauthorized, and mail containing these markings was sometimes tolerated and at other times rejected by subsequent postal authorities.

Period of Use on this Ship:

- January 1912 to March 1912



Komet, while in Australian service as *HMAS Una*

German New Guinea

Deutsch-Neuguinea



Seepost Postmarks

Deutsch-Neuguinea Inselfahrt

Catalog:

- Friedemann Unlisted
- ArGe Kolonien RDS Delphin



Delphin

Type: Government steam yacht
Launched: 1877 as *Sea Queen*
Fate: Sold to Hong Kong, 1912

For an unknown period, the steam yacht *Delphin* provided transportation for government officials throughout Deutsch-Neuguinea.

In the course of these travels, it also carried mail on an ad hoc basis. Mail transported on the yacht received a handstamped cancellation. These cancellations were unauthorized.

The yacht went on to serve in Karolinen, and the cancel is more commonly found on Karolinen stamps.

Period of Use on this Ship:

- Prior to 1903



Delphin

German New Guinea

Deutsch-Neuguinea



Russian Censorship Markings

Д. Ц.

Catalog:

- Friedemann Unlisted
- ArGe Kolonien D.Z. ♦1



Beginning 1 October 1903, some mail collected from Germany's Pacific colonies was transported to Germany via the Trans-Siberian Railway. This routing was permanently terminated upon the outbreak of World War I. In the period immediately prior to the outbreak of World War I, Russia began censoring mail passing via this route.

The most common censorship marking consisted of a handstamped box containing the letters Д. Ц., an abbreviation of Дозволено Цензурой (passed by censor), in red ink.

German New Guinea

Deutsch-Neuguinea



Russian Censorship Markings

3-Line Signed Censor Mark

Catalog:

- Friedemann Unlisted
- ArGe Kolonien DOSWOLENO ZENSUROI... ♦2a

ДОЗВОЛЕНО ЦЕНЗУРОЙ
Военный цензор

Н.Поручик.

Бабаяев

Beginning 1 October 1903, some mail collected from Germany's Pacific colonies was transported to Germany via the Trans-Siberian Railway. This routing was permanently terminated upon the outbreak of World War I. In the period immediately prior to the outbreak of World War I, Russia began censoring mail passing via this route.

This censor mark consisted of 3 lines of text with a signature, Бабаев (Babayev).

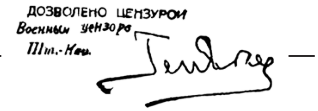
German New Guinea

Deutsch-Neuguinea



Russian Censorship Markings

3-Line Signed Censor Mark



Catalog:

- Friedemann Unlisted
- ArGe Kolonien DOSWOLENO ZENSUROI... ♦2b

Beginning 1 October 1903, some mail collected from Germany's Pacific colonies was transported to Germany via the Trans-Siberian Railway. This routing was permanently terminated upon the outbreak of World War I. In the period immediately prior to the outbreak of World War I, Russia began censoring mail passing via this route.

This censor mark consisted of 3 lines of text with an unidentified signature ("Geivochu" or "Geiwotschu"). At present, this mark is known only on mail from the German Post Offices in China. As mail shipments from German New Guinea and the German Post Offices in China were sometimes transported together along the same route, it is possible that this mark may exist on mail from German New Guinea, but at this time, no such pieces are known.

German New Guinea

Deutsch-Neuguinea



German Censorship Markings

Rabaul Censor Mark

Catalog:

- Friedemann: mentioned but not listed
- ArGe Kolonien Gouvernementsseitig unter KRIEGSRECHT...

Gouvernementsseitig

unter KRIEGSRECHT geöffnet

Rabaul , Septemb. 1914.

Überwachungsoffizier :

Upon the outbreak of World War I, some mail departing Rabaul for Germany received a German censor mark. The mark states “Gouvernementsseitig / unter KRIEGSRECHT geöffnet / Rabaul, Septemb. 1914. / Überwachungsoffizier:” (Opened by the government under martial law, Rabaul, September 1914. Censoring officer:) with the name of the reviewing officer.

The mark can be found on civilian mail originating in Rabaul, Herbertshöhe, or Maron, and on Feldpost postcards originating in Rabaul or Herbertshöhe.



British Censorship Markings

“Opened By Censor” Tape

— — — — — **OPENED BY CENSOR** —

- Catalog:
- Friedemann Unlisted
 - ArGe Kolonien OPENED BY CENSOR

Upon the outbreak of World War I, some civilian mail departing Deutsch-Neuguinea passed through areas under British control. Covers that were opened by British censors were closed with tape stating “OPENED BY CENSOR” in red text on white tape.

German New Guinea
Deutsch-Neuguinea



Auxiliary Postal Markings

Wegen Kriegzustandes zurück. **Wegen Kriegzustandes zurück.**

After the outbreak of World War I, items that could not be delivered to D-NG were stamped with a variety of return markings. This handstamp states “Wegen Kriegzustande zurück.” (Returned due to state of war.)

German New Guinea
Deutsch-Neuguinea



German New Guinea
Deutsch-Neuguinea



Postmarks

German New Guinea
Deutsch-Neuguinea



Marine-Schiffspost Postmarks

German New Guinea

Deutsch-Neuguinea



Seepost Postmarks

German New Guinea
Deutsch-Neuguinea



Seepost Postmarks

German New Guinea

Deutsch-Neuguinea



Seepost Postmarks

German New Guinea
Deutsch-Neuguinea



Seepost Postmarks

German New Guinea
Deutsch-Neuguinea



Seepost Postmarks

German New Guinea
Deutsch-Neuguinea



Auxiliary Postal Markings

German New Guinea
Deutsch-Neuguinea



Foreign Postmarks